

# CANTERBURY BRANCH NZSG NEWSLETTER

**Meetings** - Parkview Community Lounge Hall, 75 Queenspark Drive, Parklands  
Monthly – 2<sup>nd</sup> Thursday evening at 7:30pm & 3<sup>rd</sup> Thursday morning at 9:45am  
*Visitors welcome – Gold coin donation*

**Email** - [CanterburyNZ@genealogy.org.nz](mailto:CanterburyNZ@genealogy.org.nz)

**Facebook** - <https://www.facebook.com/CanterburyNZGenealogy/>

**Canterbury Branch Website** - <http://canterburygenealogy.wordpress.com/>



Issue # 3 / 2019

April 2019

**Our meeting venue - Parkview Community Lounge Hall, 75 Queenspark Drive, Parklands**

**Thursday 11<sup>th</sup> April - 7:30pm** - Evening Meeting – Parkview Community Lounge - Hall (*Library open 7:00-7:30pm – cuppa after*)

## “Voices Against War”

**Margaret Lovell-Smith will share some of the work she has been researching for “Voices Against War”- the courage, conviction and conscientious objection to WWI in Canterbury.**

Margaret is a community historian and was the lead researcher and writer in this story that was co-ordinated by the Disarmament and Security Centre in Christchurch, for an educational peace project, “*Pacifist Women, Men and their Families in Canterbury*”.

**Thursday 18<sup>th</sup> April at 9:45am** - Morning Meeting - Parkview Community Lounge – Hall - (*Arriving earlier for a cuppa*)

*Note earlier start time for our morning meetings. The meeting will start at 9:45am with morning tea while we have notices & members input, followed by the speaker from 10 -11am. You are most welcome to go down to the Donnington Room to continue chatting following the meeting.*

## “Nga Tāonga Sound and Vision”

**Nga Tāonga Sound and Vision is New Zealand’s audiovisual archive.**

Sarah Johnson from Nga Tāonga Sound and Vision will speak about the audiovisual recordings that they have in their archive and how we could access them for our family history.

### April - NZSG Canterbury Branch & Other Events

Thursday 25<sup>th</sup> **ANZAC Day** - refer to newspapers, online, TV & radio for local events.

### May - NZSG Canterbury Branch Events

Saturday 4<sup>th</sup> **Irish Interest Group** - Bi-monthly informal group asking & answering questions, sharing information, resources & knowledge. **10:00am - Parkview Community Lounge – Donnington Room**

Thursday 9<sup>th</sup> **Evening Meeting – Annual General Meeting**

**7:30pm - Parkview Community Lounge – Hall**

Thursday 16<sup>th</sup> **Morning Meeting – Manager for Canterbury Crematoriums will talk about the records they hold and how we can access them.**

**9:45am – Parkview Community Lounge – Hall**

Saturday 25<sup>th</sup> **Computer Interest Group** – Bi-monthly informal group asking and answering questions, sharing websites, discussing computers and genealogy programs. We will also look at some *FamilySearch* Affiliate Library records. 10:00am until around 12 noon. We will stop half way through for a cuppa break. **10:00am - Parkview Community Lounge – Hall**

Saturday 25<sup>th</sup> **Continental Europe Interests – individual research session** – led by Kathy Bisman ([kathmark5354@gmail.com](mailto:kathmark5354@gmail.com)) and other experienced genealogists. This will be from **12:30-2:30pm. Parkview Community Lounge – Donnington Room Canterbury Branch Library will also be open from 1pm – 3pm.**

Monday 27<sup>th</sup> **Australian Interest Group** - Tri-monthly informal group asking and answering questions, sharing information, resources and knowledge. **10:30am - Parkview Community Lounge – Donnington Room**

### JUNE 2019

This is a heads-up for you to start thinking about your research, so you can prepare for research sessions with assistance given, in June.

**BOTH** – the evening and the morning meetings will be **Research meetings** and there will be people from the Australian, European, Irish and UK groups as well as all our library and computer resources, available to help you individually.

*For user groups, why not stay for lunch & use Branch Library resources for research after a meeting! If your surname is between Q & Z please offer to help with meeting tasks & looking after raffle & sales table at meetings this month.*

### WHERE TO NEXT WITH YOUR DNA RESULTS?

There is an informal group to explore the next steps in using your DNA test results including the use of GEDMatch, navigating the test results and participating in various Project groups. The format is collaborative and will use email round-robin or meetings to share information and ideas. Please contact Bruce Holm to join the group & share ideas and information.

Bruce [bruce.holm@gmail.com](mailto:bruce.holm@gmail.com)



**NZSG members have access to DNA webinars in the Member's Only area of the NZSG website.**

*Access to the DNA Bootcamps produced by Hack Genealogy covering a variety of topics by genetic genealogy expert Mary Eberle, JD of DNA Hunters. NZ Society of Genealogists Inc. have purchased a license so that our members can enjoy the Boot Camps free of charge.*

**FROM THE COMMITTEE****Branch News:****Anglican Archives Visits**

After the presentation in March by Jane Teal, archivist at Christchurch Anglican Archives, we have arranged for two branch visits with the first one on **Saturday 13<sup>th</sup> April. There is a limit of 7-10 people.**

The available space at the archive is limited and Jane has suggested that we stagger our visit with 2 sessions:

**10.30am – 12pm and 12.15pm- 1.45pm.**

From her presentation we learnt that the archive holds quite a bit more than baptisms, marriages and burials. There are also banns books, confirmations, Sunday school records, church minute books and much more although these are not available for all churches.

Before putting your name down please consider what records you would like to access and email Jane at

[archivesdiochch@anglicanlife.org.nz](mailto:archivesdiochch@anglicanlife.org.nz) to find whether those records are available for the church(es) you are interested in. If they are, then she will have them available to be viewed when you visit on the 13<sup>th</sup> April.

To put your name on the list please phone Sandra on phone 349-3806 with your preferred time slot, but please make sure that the records you are looking for are held at the archive.

We have also pencilled in another visit later in the year on Saturday 19<sup>th</sup> October but also check their website for other opening times if these dates don't suit. Sandra

**Proposed Branch visits to the new Central Library – Tūranga**

I have made arrangements for two branch visits to Tūranga which will incorporate a tour of the library itself and a look behind the scenes, with a focus on the Family History section. Places on these tours need to be pre-booked.

The dates I have requested are: **Thursday 4<sup>th</sup> April 2:00-3.30pm and Wednesday 10<sup>th</sup> April 10:00-11.30am**

Parking is available at The Crossing carpark - \$2 for 2 hours flat rate (cash or EFTPOS) then \$2 per half hour or part thereof.

By bus to the Bus Exchange or to the Super Stop on Manchester Street.

If you would like to participate please put your name on the lists which will be available at the branch meetings in March or phone me on 349-3806 to add your name. Sandra

*[If you are unable to get to our specialised Family History tour, there are also tours of the Central Library - Tūranga, led by volunteer tour guides, leaving from entrance area, Ground Level at 11:00am Monday to Friday. Tours cover all five floors of the building and are 45 minutes long. For individuals and small groups, no booking is required.]*

**Raffle Tickets – Prize is "One Year MyHeritage Complete Plan"**

Lastly, a reminder that tickets for the *MyHeritage* Complete Plan subscription raffle we are running are still available and I have the ticket sheets available at each meeting if you would like to take part. This prize was kindly arranged by Jan Gow who visited us in November. The tickets are \$2 each or 3 for \$5 and we will be drawing the raffle at the AGM in May. So, if you haven't already bought a ticket bring some cash with you to meetings. This prize is valued at \$350+ and details of what is included will be available at meetings. The winner will be contacted if they are not at the meeting.

**Membership Subscription Renewal - Payment Required by 30<sup>th</sup> April 2019 please for the year ending 31<sup>st</sup> March 2020**

With your posted newsletter this month you will receive your subscription renewal form for the coming year. (*Email delivery will be a few days later.*) There are one or two changes to it, payment options being one. We would prefer payment by internet banking but realise not everyone is comfortable with this, so instructions for a teller deposit at any branch of the Westpac has been added. Unfortunately, Westpac are the only bank where you can't use an alphabetic reference, they accept numerals only. We have asked you to use your phone number in the reference field so we can identify who has paid, but please also make sure you either phone Maureen (329-5251) when you make the deposit, or email your form back & note that you have paid at a bank branch. If you are in credit, your form will state this & no payment is required.

The other change is that we have added a sentence regarding the sharing of your contact details. These will only be available to committee members where necessary and will NOT be made available to any outside organisation.

For those members who receive their newsletter by post, perhaps consider taking the email option when renewing your membership this year, as once again, NZ Post is increasing the cost of postage from 1<sup>st</sup> July 2019. We will continue to post the newsletter to those who are unable to receive it by email. *Membership – Fiona & David Lees* [NZSG-CantyGroup-Newsletter@hotmail.co.nz](mailto:NZSG-CantyGroup-Newsletter@hotmail.co.nz) Phone 349-9431

Ian Dunbar has offered to put his name forward for the Treasurer's position in May and has joined the committee in the meantime. Of course, this position will be voted on at the AGM so if there is anyone else willing to be nominated please come forward.

*As always, any comments, suggestions or gripes please get in touch.* [serrals@xtra.co.nz](mailto:serrals@xtra.co.nz) Phone 349-3806 - Sandra Serra

**CANTERBURY BRANCH LIBRARY**

**AT PARKVIEW COMMUNITY LOUNGE - 75 QUEENSPARK DRIVE, PARKLANDS**

**Open: 1<sup>st</sup> & 3<sup>rd</sup> Thursday of Month from 12noon – 3:00pm & 2<sup>nd</sup> & 4<sup>th</sup> Saturday of Month from 1:00pm – 3:00pm.**

**Use your branch library - a great opportunity to have one on one help for your research.**

**Recent Acquisitions in the Branch Library**

- **Bobs and Singles** - A history of the Christchurch Cathedral Society of Bell Ringers
- **Exiles of '98** - Ulster Presbyterians and the United States
- **Antrim and Argyle** –Some Aspects of the Connections
- **Plantations in Ulster, 1600-41** – A Collection of Documents
- **75 Years- The story of M O'Brien & Company Limited** – Boot makers in Christchurch  
(My grandfather, John Murphy worked for the company for over 50 years, must have started at age 15)  
These books will be on display in the Donnington Room.

**Search our library catalogue online, so when you come to the library, you will already know what is there.**

<https://canterburygenealogy.wordpress.com/branch-library/> Jan Slater phone 354-6494 or 022 351 9552, [jan.slater46@gmail.com](mailto:jan.slater46@gmail.com)

**District Keys to the NZ Registration Indexes – Births** - 1848 onwards – our Branch Library is missing one of our 2 sets. We usually have one set with the microfiche and one available to borrow. Can you help please if you know where the 2<sup>nd</sup> set may be. Fiona

**Christchurch's Darkest Hour – Friday 15<sup>th</sup> March 2019**

The Christchurch mosque shootings were two consecutive terrorist attacks at mosques in Christchurch, during Friday Prayer on 15<sup>th</sup> March 2019. The attacks began at the Al Noor Mosque in the suburb of Riccarton at 1:40pm, and continued at the Linwood Islamic Centre at about 1:55 pm.

The attacks killed 50 people and injured many others. An Australian man, was arrested and charged with murder. Politicians and world leaders condemned the attacks, and Prime Minister Jacinda Ardern described the attacks as "one of New Zealand's darkest days". It is the deadliest mass shooting in modern New Zealand history.

This tragedy has affected us all to a greater or lesser degree. We all have a connection with Christchurch and this is a horrible act against our people, our city and against our country. Many of us know or are acquainted with people of so many diverse cultures, nationalities and religions in our city. We all need to stand together – **We Are One**.



Fiona

**We Are One – Ko Tātou, Tātou – National Remembrance Service – Friday 29<sup>th</sup> March 2019**



The meaning behind this design. Ngāi Tahu master carver and artist Fayne Robinson has created an artwork for the National Remembrance Service based on the mangōpare (hammerhead shark) symbol, which signifies unity, strength, courage and determination. Green represents Islam and also signifies pounamu (greenstone) which is found only in the South Island of Aotearoa. In the context of the National Remembrance Service in Ōtautahi, the two mangōpare reflect our communities coming together as one.



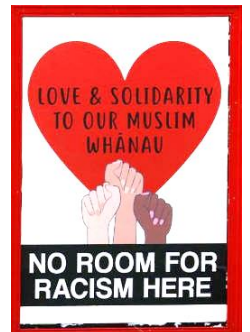
**We are one** and we will be forever connected. **Ko tātou, tātou.**

Thousands gathered at Hagley Park in Christchurch for **Ko tātou, tātou - We are one**. It was attended by over 23,000 people and dignitaries from 59 countries. The service featured performances from Marlon Williams, Yusuf Islam (Cat Stevens), Holly Smith & Teeks and Maisey Rika singing the National Anthem.

Jacinda Ardern's speech was inspirational, with a standing ovation from the beginning. She finished with reminding us of the words of our National Anthem. - <http://www.msn.com/en-nz/news/national/the-nation-that-discovers-the-cure-pms-anti-racism-speech-sparks-standing-ovation/ar-BBVmqA1?ocid=ientp>

One of the survivors of the Christchurch terror attack, Farid Ahmed, told the crowd at the remembrance service he had forgiven the shooter who killed his wife. His speech was also inspirational and deserved a standing ovation. - [https://www.nzherald.co.nz/national-video/news/video.cfm?c\\_id=1503075&gal\\_cid=1503075&gallery\\_id=205215](https://www.nzherald.co.nz/national-video/news/video.cfm?c_id=1503075&gal_cid=1503075&gallery_id=205215)

Full service can be watched at - <https://www.radionz.co.nz/news/national/385844/ko-tatou-tatou-we-are-one-national-remembrance-service-for-christchurch-mosque-attacks>. Over two hours – well worth watching and listening to if you haven't already seen it.



**Ōtautahi pays tribute with Aroha. Christchurch pays tribute with Love.**

**"We each hold the power [to combat hate], in our words and in our actions, in our daily acts of kindness. Let that be the legacy of the 15<sup>th</sup> March."** Jacinda Ardern

Fiona

**We Are All Immigrants – Which Waka Did your Family Arrive In?**

We are all immigrants to New Zealand (Aotearoa), with many coming here for a better life for their family and for a safer place to live. Many of those killed or injured in the attack at the mosques were recent immigrants, escaping violent conflicts and poor conditions in their own countries, thinking they would be safer here.

How and when did your first immigrants arrive in New Zealand, or are you the first? Did they come by waka, sailing ship, steam ship, DC10, Boeing 747, Airbus or what?

Fiona

**20<sup>th</sup> Battalion Memorial**

The memorial to the 20<sup>th</sup> Battalion is probably the least known of memorials to WWII soldiers in Christchurch. The 20<sup>th</sup> battalion was formed in late 1939 and the four companies were made up with men from Canterbury, Southland, Otago and Nelson – Marlborough - West Coast. It was one of the most decorated units and produced 3 VC's (Upham and Hinton), six Distinguished Service Orders and four OBE's. Two notable commanders were Kippenberger and Freyberg.

In 1943 the NZ Government set up training centres for returning servicemen in various locations throughout the country. In 1944 Mr Tracy Gough donated a large tract of land in Riccarton Road & with a further 2 acres added to it building eventually commenced for the Disabled Servicemen's Re-establishment League which included accommodation for up to 200 men, workshops & a retail building fronting Riccarton Road. Two avenues formed part of the site & one of these was named 20<sup>th</sup> Avenue. In September 1948 the avenue was planted with fir trees in remembrance of the fallen.



In later years the function of the centre changed and a large area of land was sold off and developed for housing. This included much of the area containing 20<sup>th</sup> Avenue and an arrangement was made with the developer to include a memorial plaque which was unveiled in 1996. This memorial became the centre-piece of the street now known as Jane Deans Close which is just off Harakeke Street from the Riccarton Road end. In later years this memorial has become the focus of ANZAC day commemorations for the 20<sup>th</sup> Battalion and is attended by 200 – 300 descendants and dignitaries, along with the residents of Jane Deans Close who also provide a welcome hot drink and morning tea after the service. The Salvation Army who have been closely associated with the regiment since its formation are also in attendance. There is one remaining member of the 20<sup>th</sup> who lives in Rangiora and at 99 is determined to attend the service again this year.

[https://en.wikipedia.org/wiki/20th\\_Battalion\\_\(New\\_Zealand\)](https://en.wikipedia.org/wiki/20th_Battalion_(New_Zealand))

[https://www.facebook.com/search/top/?q=20th%20battalion%20nzef&epa=SEARCH\\_BOX](https://www.facebook.com/search/top/?q=20th%20battalion%20nzef&epa=SEARCH_BOX)

Thanks to Bruce Holm



**SNIPPETS** - Some bits & pieces of interest and some to help you with your research:

- **Parklands (City Council) Library has re-opened** - Parklands Library was closed in November 2018 to undergo routine earthquake repairs. These repairs are now complete, and the library re-opened on Friday 29<sup>th</sup> March 2019, ahead of schedule. The community was welcomed back from 9am Friday 29<sup>th</sup> March. <https://my.christchurchcitylibraries.com/parklands-library/>
- **Christchurch City Council Archives**  
I recently did some look-ups for an NZSG member in the North Island which required a visit to the Christchurch City Council Archives which are held at Iron Mountain near the airport. The records I was looking at were Paparua Rate Books from 1929 onwards (with some gaps) but there are other records available. Check the council website to see what records might be of interest to you. <https://www.ccc.govt.nz/the-council/how-the-council-works/council-history/council-archives/>  
Don Robertson ([don.robertson@ccc.govt.nz](mailto:don.robertson@ccc.govt.nz)) is the person to contact and he sets aside Tuesday's and Thursday's 1pm for accessing the records. You need to make an appointment first as he is not on site at Iron Mountain, and he advises reception who he is expecting otherwise you won't be let through the gate. There's an intercom at the gate where you give your name and who you are to see, then the gate is opened for you. Reception signs you in, contacts Don who will take you to the reading room where he will have the records ready for you.  
As the books I was looking at were for Paparua I convinced Lindsay to come too on the off chance he might find some information on land that his father had owned near Rolleston in the early 1930's. He found his father's name listed in the rate book which also gave the Rural Section number. Next day we were off to Archives NZ to look at the Deed Books and they were also able to show us a map with the Rural Section marked. As it's an easily recognised triangular piece of land we now know exactly where it is and drive past it quite frequently on the way to Hororata. It was an unexpected find which has put another piece in the puzzle. *Sandra*
- **Shrove Tuesday** - *Shrove Tuesday (also known in Commonwealth countries and Ireland as Pancake Tuesday or Pancake Day) is the day in February or March immediately preceding Ash Wednesday (the first day of Lent), which is celebrated in some countries by consuming pancakes. In others, especially those where it is called Mardi Gras or some translation thereof, this is a carnival day, and also the last day of "fat eating" or "gorging" before the fasting period of Lent. This moveable feast is determined by Easter. The expression "Shrove Tuesday" comes from the word shrive, meaning "absolve". Shrove Tuesday is observed by many Christians, including Anglicans, Lutherans, Methodists and Roman Catholics, who "make a special point of self-examination, of considering what wrongs they need to repent, and what amendments of life or areas of spiritual growth they especially need to ask God's help in dealing with". The most famous of these events has become the Brazilian Carnival in Rio de Janeiro.*  
*For further information, see Wikipedia - [https://en.wikipedia.org/wiki/Shrove\\_Tuesday](https://en.wikipedia.org/wiki/Shrove_Tuesday) Phillip Creed*
- **Project Indexing Names on G R Macdonald Index Cards** - Seen on *Genealogy New Zealand* and *Beyond Facebook* page  
We're looking for computer-savvy volunteers to tag names which appear in the '*G R Macdonald Dictionary of Canterbury Biography*' to make them computer-searchable. The Macdonald Dictionary comprises more than 12,000 handwritten index cards of biographical information on 22,000 nineteenth-century Cantabrians. Currently, the scanned index cards are available on the Museum's website, but only the heads of each household are digitally searchable.  
The project aims to tag and transcribe the hundreds or possibly thousands of other names mentioned in the biographies, including wives, children, business partners and occasionally neighbours.  
Joanna Szczepanski, Canterbury Museum Associate Curator Human History, says one of the project's major benefits is providing better access to information about the women of nineteenth-century Canterbury.  
*"Only 64 women have their own entries, mostly because they were high profile and had a public life, but many other women are hidden in their husband's or father's biography. This project will give them much more visibility in Canterbury's historical record."*  
If you'd like to help with this fascinating project, head along to *Zooniverse*, create an account (it's free) and read the tutorial explaining how to get stuck in. *Canterbury Museum 28 February 2019*  
<https://www.zooniverse.org/projects/christopherthomson/macdonald-dictionary?> *Thanks to Graham Houlton [g.houlton@xtra.co.nz](mailto:g.houlton@xtra.co.nz)*
- **Sumner to Lyttelton Road Re-opens After Earthquake Repairs Completed** - After two years of hard work the Sumner Road from Lyttelton to Evans Pass was re-opened on Friday 29<sup>th</sup> March. The iconic 2.6 kilometre route, which gives scenic coastal views as it winds from Sumner to Lyttelton, has been closed since 2011 due to damage from rockfall caused by the Christchurch earthquakes. The work has involved scaling the bluffs above the road to remove any loose rock, building a 407-metre long, 15m wide catch bench for rock to fall on, repairing about 29 retaining walls, and re-paving about 2.5km of road.
- **NZ History – Dates in NZ History** for April - <https://nzhistory.govt.nz/calendar/4>

### MEMBERS' RESEARCH INTERESTS & QUERIES AND REQUESTS FOR LOCAL INFORMATION

Members are invited to submit a recent find, surnames or topics of interest, or to ask a question, for inclusion in this newsletter. This is a section for members to use – with members' names, interests & localities - this could link people who are researching same names or in similar areas.

- **Details of O'MAHONEY Reunion** - The O'MAHONEY Clan Gathering is to be held at the St. Martins Bowls Club, 15 Clouston Street, St. Martins Christchurch on Saturday 6<sup>th</sup> April, starting 12:30pm, concluding at your leisure up to 4pm/5pm. O'Mahony Clan surname variations: Mahony / O'Mahoney / Mahoney / Marney. *Thanks to Geraldene O'Reilly for this item.*  
Contact Greg Mahony at [mahonygreg@yahoo.com.au](mailto:mahonygreg@yahoo.com.au) O'Mahony Society website [www.omahonysociety.com](http://www.omahonysociety.com)
- **Writing a Family Story** - Hi, I am looking for someone to assist me in writing some stories about my family. Like most genealogy researchers I have heaps of documents and family stories however I don't know how to bring them into book form. I live in Parklands. *Susan was unable to attend the writing workshop by Jo Bayley recently. Yours sincerely Susan Taylor [taylor17@inspire.net.nz](mailto:taylor17@inspire.net.nz)*
- **Female Convicts Research Centre - Autumn 2019 Seminar – Sunday 5<sup>th</sup> May 2019 – Places still available.**  
**Topic: The Anson and the Probation System** **Venue: Hobart Town Hall**  
The seminar program and registration details are available on our website at <https://www.femaleconvicts.org.au/fcrc-seminars/seminar-registration>. Due to increased costs associated with running the seminar, registration will be \$50. Bookings and payments must be finalised by Sunday, 28<sup>th</sup> April. *Regards, Dianne Snowden From Alister & Denise Mckenzie [aj.de@xtra.co.nz](mailto:aj.de@xtra.co.nz)*

### MEETING REVIEWERS WANTED FOR 2019

We are looking for meeting review writers for both evening and morning meetings.

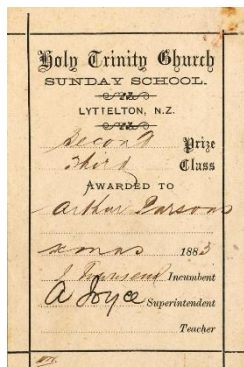
As you know we have a review in each newsletter of the previous month's meetings & these are generally written by committee members. **Can you help with taking on this task occasionally?**

The committee would really appreciate some help with this so if you would like to find out more, or can offer your help, please get in touch with me. If you have any other contributions for the newsletter let Fiona or David know about those too, they are always on the lookout for content. *Sandra – Phone 349-3806*



**MEETING REPORTS****Thursday Evening Meeting – “What Early Christchurch Information is Held by Anglican Archives” - with Jane Teal**

Jane Teal, archivist for the Christchurch Diocese Archives, gave an engaging talk on what records can be found at the archives and how they can add depth to our research. An Anglican life was marked with baptism, Sunday School attendance and examination, confirmation, marriage, and burial. These events were recorded by the church through registers, Sunday school rolls, prize-givings and certificates, marriage banns and burial records. Alongside, was the record of the operational side of the church through parish council minutes. It is these rich records held by the archives that Jane advised could fill the gaps between the traditional birth, death and marriage records giving depth to the lives our ancestors lived.



Such information might include the names of godparents from baptism records. A baptism record can also identify a proxy where the godparents were not present. Movement between churches can be found in children's Sunday School records or in the church warden's books. The church council minutes add understanding of the running of the church our ancestors attended and the other congregation members. The frequency of a child's attendance can be found in the Sunday School roll books which can also aid identifying when a child was born. The marriage banns gives the dates the banns were read which indicate when the couple intending to marry attended church together as they were both required to be present at the reading.

Jane mentioned the *John Kinder Library* website (<http://www.kinderlibrary.ac.nz/>) which contains scanned copies of church newspapers and magazines which can be searched like *PapersPast*. She also mentioned that some Sunday Schools announced exam results in the public newspapers so searching *PapersPast* can be a good source too. Jane recommended reading the topic guides found on Kinder Library website to learn more about all things Anglican.

Jane could easily have talked at a greater length of the value of the records held within the archives, however even the tidbits she shared were valuable in the leads they can provide for further research. It was interesting to learn that while children were usually baptised in the church, if they were very sick, they might have been baptised at home or by a matron if at a nursing home.

The geographic boundaries of the Christchurch Diocese has changed over the years, and an outline of these changes can be found on the Archives website ([anglicanlife.org.nz/archives/](http://anglicanlife.org.nz/archives/)) where more information of records held can be found. Jane advised that research space, resourcing and car parks are limited so access is restricted to Wednesdays 1pm-4.30pm, some Saturdays during summer, and all visits must be by appointment. Jane requests researchers send an email prior to visiting ([archivesdiochch@anglicanlife.org.nz](mailto:archivesdiochch@anglicanlife.org.nz)) with the scope of their research and the date they intend to visit. She will then confirm whether the appropriate records will be available and provide directions to the archives.

*Thanks to Natasha Wells for report.*

**Thursday Morning Meeting – “Cemetery Finds” – with Kathy Bisman**

Kathy gave a very interesting talk on cemeteries, along with a *PowerPoint* presentation (her first one!). Kathy was lucky enough to live in a place that was near her ancestral home. She has spent a lot of time in cemeteries on Banks Peninsula.

**How to find a cemetery:**

- Burial Locator CD
- New Zealand Cemetery Records book
- Google

The book '*The Lost Graves*' by Alison Whitelaw is good – there are lots of similar books available in New Zealand.

**Types of cemeteries:**

- Modern
- Family (private) – you need permission to visit a family cemetery. Sometimes family cemeteries will also include farm workers. They often include many generations.
- Public, e.g. council owned.
- Church – these are administered by the church and the land is owned by the church.
- Māori/Urupa – these are hard to access. There will also be European burials in Māori cemeteries.

**Where are records held?**

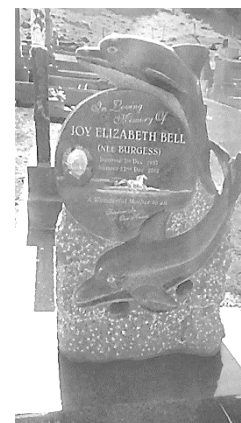
- Burial registers – council and church – there is usually only one record
- Churches have better cemetery maps than councils
- Church histories are better than council ones – they have more info

**What can be found on headstones and plaques?**

- Sometimes list whole families – parents, children, grandchildren
- Plaques sometimes have what ship they came to New Zealand on & how long they have lived in a place
- Sometimes there are plaques in two or more different places for the same person. Plaques are sometimes added to a grave where the headstone has fallen
- Some memorial plaques are in public places, e.g. on seats

Cemeteries hold lots of extra details that you might not think of. Keep going back to cemeteries to check for new burials & plaques. If you can't find a burial, buy the death certificate – it will tell you if they have been cremated. Not everyone that has been cremated has a plaque. Some words of warning: *Remember – the information on a headstone is not always true! And don't always believe what is in an obituary.*

*Thanks to Jan Watts for report.*



**Computer Group Meeting** – A great turnout & an interesting session (as usual), with *FamilySearch*, wandering around Internet to discussing updating media to save files & videos onto, & inserting pictures into Word.

Started by showing a video interview of a survivor of the shootings, to acknowledge the loss & grief in Christchurch.

**FamilySearch** – logged in without **Affiliate Library** access & then with, to show access to restricted records (eg. *Search Catalog* / Film # 2048451, Marriages in Virginia). Looking at images on film, scrolling through as we used to do on film readers. **Download images** – either 'Save As' to your location or look for download default area. Rename file so you know what it is later. Can view in Windows PhotoViewer or



similar & can enlarge & transcribe. In Windows Explorer, can add extra metadata (describe in more detail) by right click file > Properties > Details > Comments and fill in more. In *FamilySearch*, can copy source information from image and Paste into *Comments* area. Then *View Comments* by *Adding a Column* in Windows Explorer (right click on Columns and Add.)

**Oral History** – example of informal interview with cousin's mother. Can use voice recorder or Sound Recorder on PC or Mobile Phone (eg. Voice to Text). Ask questions, or use photos or family tree to prompt for questions. Or ask Google – "Oral history questions genealogy" – found this example - [https://www.genealogy.com/articles/research/70\\_tipsoral.html](https://www.genealogy.com/articles/research/70_tipsoral.html) - "Get Nosy with Aunt Rosie: Example Questions for Oral Histories - Fertilizing Your Family Tree with Conversation"

**Compressing / combining several photos / pictures** into a Compressed (Zipped) Folder so can email as one item. (Select pictures > right click > Send To > Compressed Zipped Folder)

**Insert photos / pictures into Word** or other programs – don't use Copy & Paste as file size increases dramatically. Right click picture and set 'Wrap Text' to Tight, so text flows around pictures. Then resize pictures in proportion by click and drag from corners, or right click picture > Size & Position and choose % reduction in size and the wrapping. Can also insert picture into a Text Box.

**Save Image As** – In Word, PDF and many places on Internet and other programs, can right click on an image and 'Save Image As' to a location – make sure you rename and also save source information.

**Transferring / updating storage media** so not outdated eg. video to DVD - Clare mentioned a shop in Merivale that converts VHS to digital - Igloo Prints: Shop 9, Merivale Mall, 189 Papanui Road. [www.photo.co.nz](http://www.photo.co.nz) 03 355 7534 or 0800 CAMERA.

Fiona

**A Cemetery Visit - Mount Magdala Cemetery** – Lorraine Wilmshurst took members for a walk through Mount Magdala Cemetery at Halswell, to learn about the history of Mount Magdala & the surrounding area, including looking at the outside of the St John of God Chapel.

Mount Magdala Cemetery of the Good Shepherd Sisters is located in Halswell. The cemetery opened around 1888 & is now closed. The establishment of the Good Shepherd Convent, dates from the early 1880's. Today at Aidanfield, the historic Mount Magdala Cemetery & the St John of God Church are two remaining connections with the work of the Good Shepherd Sisters.

Mount Magdala was the pioneering Catholic social work institution for the care of woman. The Sisters aimed to protect and rehabilitate disadvantaged women, orphans and the elderly. The complex was founded as a predominantly self-sufficient community with a farm and orchard. Many residents were employed in laundry, sewing and cooking activities or attending industrial school. The laundry was run as a commercial venture, doing laundry for Christchurch hotels. By the 1930's Mount Magdala was a self-contained community housing almost 500 people. Many new buildings were added over the years including a chapel in 1900 along with an orphanage in 1934. Of the many that passed through the institution, some were restored to their families and others were comfortably married or obtained domestic situations. A relatively small number lived out their lives in the sisters' care & were buried in the cemetery. Now placed at the head of the cemetery are the few permanent headstones. The wooden crosses that once marked the graves are now gone. The community operated until 1966 when the site was taken over by the St John of God brothers who continue to operate disability support services there.

Original cemetery plans and the memorial wall suggest that there are as many as 278 known graves from 1888 to 1972. The neighbouring Aidanfield subdivision is named after Mother Aidan Phelan who is buried in the cemetery. <https://www.ccc.govt.nz/culture-and-community/heritage/heritage-in-the-city/cemeteries/>

Thank you Lorraine for a most enlightening tour of Mt Magdala Cemetery this Saturday morning. Though perhaps at times I might have been actually distracted! Anyway, as I have a Gt-Gt-Grandmother (Margaret LODGE, {née REDDING}) sent to the institution in 1913 by the courts for one year, she stayed another two to die & be buried February, 1916. The incentive of the opportunity to visit (it was 20 years ago my previous visit) was well supported by the documentary voiced by Lorraine, (and her supporters also!!)

Thank you, Lorraine, from Barry Pycroft (and the rest of us who enjoyed the morning!)

**NZSG FRC** - Ah, the FRC. I shall call it the **Family Research Centre** just this once!

Please refer to this web page for details. < [https://www.genealogy.org.nz/the-family-research-centre-library\\_376](https://www.genealogy.org.nz/the-family-research-centre-library_376) >

See how the FRC becomes an FRC library. I wonder if the centre is different or separate from the library? But that is me being pedantic. I need to make sure I get my sources correct, and this could be ambiguous.

Anyway, during my time in Auckland – I stayed at a motel on Pah Road – I made a point of visiting the FRC (Library). I really wanted to take up the offer that is so often expressed at meetings to use the FRC.

That was a really comfortable and usefully spent 5 hours. – I had to go elsewhere for lunch – at a neat café very nearby.

My particular interest was in Swedish / Danish immigration and the folks I hoped I would find there to guide me. My introduction to the library was full and animated by the enthusiastic persons, about 4, I think, such as to have a complete one-on-one for ½ an hour. Family connections do require a soft clock!!

Well there is plenty of good value guidance. Lots of freedoms of access to a great many paper & electronic articles and items. The European & Scottish Interest Groups, just to name a couple, have their own cubicles freely at hand. My wife Dawn, whose family was the focus, looked through one set of books, while I perused others and made copies & images of the material I found was pertinent. The Hamburg immigration was of interest to me and the FRC sold me a Memory stick – you take the one you bought last time! – in order to take downloads of images from the PCs. There was nothing apparent for my folks in the lists that were of composite indexes to individual passenger lists. I was issued a book of Swedish customs, last issued last century!! Exaggeration perhaps, but that book has had few readers lately. However the knowledge written in this old 1970's culture book holds lots of relevance today; because we require information from a 100 years prior to that! Neither the Christchurch nor Auckland Libraries have copies and I have not tried other Libraries. There might be copies to buy from Amazon, but the FRC Library has it in their shelf for your benefit.

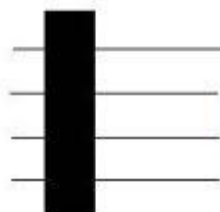
"Cradled in Sweden: a practical help to genealogical research in Swedish records. By Johansson, Carl-Erik." The FRC library Catalogues has a full & useful description of this book. That has given me an insight to my research in Sweden, essentially via "*FamilySearch.org*" which has superb localised focus.

The Catalogue, the Indexes require a lot of time & effort by many folks working on a subject, let alone many subjects. My grateful thanks goes to those folk who spend so much time on that work, work I hope is enjoyable. Not all information or idea stimulants are on-line, so one needs to visit the FRC to see if they have that brick-wall pusher-overer. For me, I became confident that what pieces I saw online was in full at the FRC & that was a source I am now able to describe as "not containing information I need." A positive outcome.!

Finally my \$91 membership is helpful, if not to me, to others. This is as unique a source as any online websites databases and real people are enjoying being helpful.

Barry Pycroft

[barry@pycroft.co.nz](mailto:barry@pycroft.co.nz)



**BISHOPDALE BRANCH**  
New Zealand Society of Genealogists Inc.



### BISHOPDALE BRANCH CONTRIBUTION TO THE NEWSLETTER

**NEXT MEETING:** Thursday 25<sup>th</sup> April 7:30 p.m. at St Margaret's Hub, 94 Farrington Avenue.

**Topic:** Our AGM and a talk on the Nurses' Memorial Chapel.

Visitors are most welcome, for whom there will be a \$3 door charge.

Regards Tony Gordon

**Convenor:** Frances Cadman Phone: 352-5605 Branch Email: [bishopdale@genealogy.org.nz](mailto:bishopdale@genealogy.org.nz)  
**Secretary:** Lis Hunter Phone: 354-3933  
**Newsletter Contact:** Tony Gordon View our branch library catalogue at <http://www.librarything.com/catalog/bishopdalenzsg>

## Waimakariri Genealogy Branch

### WAIMAKARIRI BRANCH CONTRIBUTION TO THE NEWSLETTER

Monthly General Meeting dates are held on the third Tuesday of each month from January to November. Usually there is a Guest Speaker followed by a light supper. There is no charge for these evenings.

**Next Meeting:** Date: Tuesday 16<sup>th</sup> April at 7.30pm

**Topic – To be advised.**

**Venue:** Waimakariri Branch, Rangiora Brass Band Rooms, Northbrook Road. All Welcome.

Thanks to Philip Worthington

**Convenor & Newsletter Contact:** Philip Worthington Phone: (03) 313-6730 Email: [woolstone@scorch.co.nz](mailto:woolstone@scorch.co.nz)  
 Email: [Waimakariri@genealogy.org.nz](mailto:Waimakariri@genealogy.org.nz) Website: <https://sites.google.com/site/waimakaririgenealogy/>

### EPIC CYCLE TRIP

Yes, I've been away again. The last couple of months we have been in the North Island. We covered 3550kms by car and did 540kms on our bikes on the NZ cycleways. Also visited several historic places that increased our knowledge of NZ history and the struggles our ancestors faced when they arrived in NZ.



We jet boated up the Whanganui River from Pipiriki to the Bridge to Nowhere. Our guide was a local Maori who had grown up on the river. At the different stops up the river he explained about the eeling traps, the farms, the overland journey from his grandfather's farm to Whangamomona and the reason why the bridge exists. He also explained that his grandparents never had any children of their own but brought up 18 children. His father, one of the



younger ones, took over the farm which was then passed to him and now his son runs it. Many of us have heard of Maori children living with "Auntie" – well it is quite true.

If you are in the Bay of Plenty a visit to White Island is a must. Did you know that they tried mining the sulphur and the remains of the mine are still there. The island has been in private ownership since 1936.



We drove from Pipiriki to Whanganui following the river. At Jerusalem we stopped at the convent and church of St Josephs – the Sisters of Compassion. Mother Aubert came out from France to open the mission school. She was also the founder of the Sister of Compassion home in Wellington. This is where James K Baxter lived in the commune and he is buried in the graveyard.



Kawana is an old restored flour mill and the millers cottage. Governor Grey provided government money to set up several of these along the river so farmers could process their crops.

Thanks to Lorraine Wilmshurst for this piece.

**Bohemian Ancestry Tour 2019** – Departs 22 May 2019, 13 days, \$2980, plus applicable airfare, share twin, 8 people only. Tour price includes 12 nights accommodation and all breakfasts. Barry Brown, Busch / Lankow descendant, is pleased to offer descendants of Bohemian families who arrived from there to NZ in 1800s, the opportunity to visit their forefather's birthplace. Visits to Prague, Berlin, Hamburg. Visit actual village & churches of your ancestors. **Contact** – travel agent – Suzie Wilson in Marton, phone 06 327-7082, email [suzie@nztravelbrokers.co.nz](mailto:suzie@nztravelbrokers.co.nz); or tour guide - Barry Brown – Feilding, phone 06 329-3993, email [rodenberg@inspire.net.nz](mailto:rodenberg@inspire.net.nz) Kathy Bisman



**COMMITTEE 2018 / 2019**

Convenor	Sandra Serra	349-3806	<a href="mailto:serrals@xtra.co.nz">serrals@xtra.co.nz</a>
Secretary / Webmaster	Jan Watts	595-5431 or 021 296-6399	<a href="mailto:janwatts@outlook.co.nz">janwatts@outlook.co.nz</a>
Treasurer	Maureen Kelso	329-5251	<a href="mailto:m.kelso@xtra.co.nz">m.kelso@xtra.co.nz</a>
Newsletter Editors / Membership	David & Fiona Lees	349-9431	<a href="mailto:NZSG-CantyGroup-Newsletter@hotmail.co.nz">NZSG-CantyGroup-Newsletter@hotmail.co.nz</a>
Speaker's Convenor	Lorraine Wilmshurst	358-5824	<a href="mailto:malcwilms@gmail.com">malcwilms@gmail.com</a>
	Rose Clark	332-0827	<a href="mailto:family-clark@xtra.co.nz">family-clark@xtra.co.nz</a>
	Jim Copland	(03) 318-1712	<a href="mailto:adjimcopland@gmail.com">adjimcopland@gmail.com</a>
	Philip Creed	365-9101	<a href="mailto:philipcreed@xtra.co.nz">philipcreed@xtra.co.nz</a>
	Bruce Holm	383-8168	<a href="mailto:bruce.holm@gmail.com">bruce.holm@gmail.com</a>
	Carole Jackson	388-9965	<a href="mailto:carjacko@outlook.com">carjacko@outlook.com</a>
	Philippa Wadsworth	355-8513	<a href="mailto:pkandng@gmail.com">pkandng@gmail.com</a>
	Natasha Wells	027 688-0211	<a href="mailto:natashawells552@gmail.com">natashawells552@gmail.com</a>
<b>Other contacts:</b>			
Librarian / Library	Jan Slater	354-6494	<a href="mailto:Jan.Slater46@gmail.com">Jan.Slater46@gmail.com</a>
Family history magazines	Maureen Kelso	329-5251	<a href="mailto:m.kelso@xtra.co.nz">m.kelso@xtra.co.nz</a>
School register project	Prue Purser	384-0205	<a href="mailto:purserp@xtra.co.nz">purserp@xtra.co.nz</a>
School rolls research	Rae Wilson	358-7982	<a href="mailto:wil.fam@xtra.co.nz">wil.fam@xtra.co.nz</a>
European Interest Group	Kathy Bisman	(03) 314-4114	<a href="mailto:kathmark5354@gmail.com">kathmark5354@gmail.com</a>
Australian Interest Group	Atholin Pierre	376-6367	<a href="mailto:atholin.g.pierre@gmail.com">atholin.g.pierre@gmail.com</a>
Computer Interest Group	Fiona & David Lees	349-9431	<a href="mailto:NZSG-CantyGroup-Newsletter@hotmail.co.nz">NZSG-CantyGroup-Newsletter@hotmail.co.nz</a>
Irish Interest Group	Evelyn Robertson	331-8204	<a href="mailto:robertsona@xtra.co.nz">robertsona@xtra.co.nz</a>
WWI Project - War Memorials / Boards of Honour	Evelyn Robertson	331-8204	<a href="mailto:robertsona@xtra.co.nz">robertsona@xtra.co.nz</a>

**NZSG Canterbury Branch MEMBERSHIP Subscription Notices will be sent this month - payment being due on 30<sup>th</sup> April 2019 for the coming year ending 31<sup>st</sup> March 2020. We will let you know what payment is due, or if your membership is in credit.**

**WELCOME TO OUR NEW MEMBERS:**

*We wish a warm welcome & happy researching to new members Sandra & Dick MARTIN.*

**IN MEMORIAM:** We pass on sympathy and condolences to all those who have lost family and friends recently.

**We have lost ex-member Joan Lynda TEALE (née KEARTON) a passionate genealogist & Canterbury member from 1979 - 2003.**

*Apologies for any errors and omissions in newsletter. Corrections & additions welcome. Photograph credits – David Lees – thank you*

[New Zealand Society of Genealogist's Website:- http://www.genealogy.org.nz](http://www.genealogy.org.nz)

Please let us know if you are shifting or have changed address, or email address, so we can keep our records current, and keep in touch.

**NZSG CANTERBURY BRANCH LIBRARY HOURS**

**Open: 1<sup>st</sup> & 3<sup>rd</sup> Thursday of Month from 12noon – 3:00pm  
and  
2<sup>nd</sup> & 4<sup>th</sup> Saturday of Month from 1:00pm – 3:00pm.**

*Bring along your research queries and brick walls to your branch library – use the resources there and receive assistance.*

**Branch LIBRARY at Parkview Community Lounge - 75 Queenspark Drive, Parklands**

**Canterbury Branch Library is an Affiliate Library of FamilySearch – access to restricted records here!!**

**FAMILY HISTORY CENTRE @ 25 FENDALTON ROAD**

Hours: Tuesday 10:00am - 2:00pm and 7:00pm - 9:00pm

**TŪRANGA - CHRISTCHURCH CENTRAL LIBRARY @ 60 CATHEDRAL SQUARE**

OPEN MONDAY TO FRIDAY 9:00AM – 8:00PM (GROUND FLOOR 8:00AM – 8:00PM)

SATURDAY & SUNDAY 10:00AM – 5:00PM

**CHRISTCHURCH PARKLANDS LIBRARY @ 46 QUEENSPARK DRIVE**

**PARKLANDS LIBRARY HAS RE-OPENED AFTER EARTHQUAKE REPAIRS.**

**CHRISTCHURCH FENDALTON LIBRARY @ 4 JEFFREYS ROAD**

**WILL BE CLOSED FROM 4 MARCH – 29 JULY 2019 FOR REPAIRS & IMPROVEMENTS.**

**NEWSLETTER**

*[Member Subscriptions Due by April 30]*

NZSG Canterbury Branch

C/- Maureen Kelso,

156 Powells Road,

RD 4,

CHRISTCHURCH 7674



FamilySearch  
Affiliate  
Library