

NZSG CANTERBURY BRANCH NEWSLETTER

Meetings - Parkview Community Lounge Hall, 75 Queenspark Drive, Parklands
Monthly – 2nd Thursday evening at 7:30pm & 3rd Thursday morning at 10:00am
Visitors welcome – Gold coin donation

Email - Canterbury@genealogy.org.nz

Postal - PO Box 38064, Parklands, CHRISTCHURCH 8842

Facebook - <https://www.facebook.com/CanterburyNZGenealogy/>

Canterbury Branch Website - <http://canterburygenealogy.wordpress.com/>



Issue # 10 / 2021

November 2021



We are at COVID-19 Alert Level 2:
This means: There is a limit of 50 people and the chairs will be spaced out.
You must sign in and scan in.
Masks are to be worn.
This applies to all Branch activities.

New Zealand Government
<https://covid19.govt.nz>

Programme for November 2021 – COVID-19 Alert Levels Permitting

Thursday 11th November - 7:30pm - Evening Meeting - Parkview Community Lounge – Hall

IRISH RESEARCH AND RESOURCES

Tony Gordon, who co-ordinates our Irish Group will give us some ideas, hints and suggestions on how we may be able to progress our Irish family research.

Thursday 18th November at 10:00am - Morning Meeting - Parkview Community Lounge – Hall

Note new start time for our morning meetings, starting at 10:00am with notices & members input, followed by the speaker from 10:30am – 12:00 noon. You are most welcome to go down to the Donnington Room to continue chatting following the meeting.

SYNERGIES BETWEEN LOCAL HISTORIANS AND GENEALOGISTS

Mike Noonan has taken up local history more seriously in his retirement and has lived with a genealogist for nearly 50 years. He plans to give you an insight into how the two can exist in one family. This will lead onto some insights about groups of local historians and how they interact with genealogists.

Other Dates for November 2021

Thursday 4th **Canterbury Branch Library will be open from 12noon – 3:00pm**

Saturday 6th **Irish Interest Group** – Bi-monthly informal group asking & answering questions, sharing information, resources & knowledge. Led by Tony Gordon. 10:00am. **Parkview Community Lounge – Donnington Room**

Saturday 6th **DNA & Genealogy drop-in sessions at Shirley Library** – 10:00am to 12noon – run by Shirley Library & volunteers from NZSG Canterbury Branch. *Book through Shirley Library, phone 941-7923*

Saturday 13th **Canterbury Branch Library will be open from 10:00am – 4:00pm**

Thursday 18th **Canterbury Branch Library will be open from 12noon – 3:00pm**

Monday 23rd **Australian Interest Group** - Informal group asking & answering questions, sharing information, resources & knowledge. Led by Atholin Pierre. 10:30am - **Parkview Community Lounge – Donnington Room**

Saturday 27th **Computer Interest Group** – Bi-monthly informal group asking & answering questions, sharing websites, discussing computers & genealogy programs. We will stop half way through for a cuppa break. Led by Fiona Lees. 10:00am - 12noon - **Parkview Community Lounge – Hall**

Saturday 27th **Continental Europe Interests – individual research session** – led by Kathy Bisman (kathmark5354@gmail.com) and other experienced genealogists. This will be from 12:30 - 2:30pm. **Parkview Community Lounge – Donnington Room**

Saturday 27th **Canterbury Branch Library will be open from 12noon – 3:00pm**

December 2021 Dates

Thursday 2nd **Canterbury Branch Library will be open from 12noon – 3:00pm**

Saturday 4th **DNA & Genealogy drop-in sessions at Shirley Library** – 10:00am to 12noon – run by Shirley Library & volunteers from NZSG Canterbury Branch. *Book through Shirley Library, phone 941-7923*

Saturday 11th **Last Meeting of the year** – a shared luncheon and Genealogy Quiz. Please bring along a plate of finger food to share.

Saturday 11th **Canterbury Branch Library will be open from 12 noon – 3:00pm.**

Last library day of the year. **Merry Christmas and a Happy New Year to our members.**



Programme for January 2022

Thursday 6th **Canterbury Branch Library will be open early in the year, thanks to our library volunteers, from 12 noon – 3:00pm.**

Our talks for the year start on Saturday 22nd January 2022 with the: Computer Interest Group & Continental European Interests Group. The programme for the New Year is under way but if you have a request or know of a group who members would be interested in hearing from, please contact Lorraine - malcwilms@gmail.com.

FROM THE COMMITTEE**Branch News:**

This is our last newsletter for the year 2021. What a year it has been. We now know for sure that we can't plan an event or talk and guarantee that it will actually go ahead – this has become known as our 'Plan B' year. But this is common for most around the world, as well as families kept apart by travel & entry restrictions.

We had a recent scare where we have had COVID in the community in Christchurch – brought it very close to home and made us realise that the next stage is that we may have to learn to live with COVID, as with other diseases in the past.

It has been very disappointing to learn the situation that the NZ Society of Genealogists national organisation is in, to the extent that we don't know whether the NZSG national organisation will overcome its financial crisis & continue to exist as our parent body. Times have changed & the ways we do genealogy has changed from 50 years ago, making the NZSG national organisation, as it is, less effective than when it was established. For an organisation to stay sustainable / viable as with companies, they need to move with the times.

The end of the year has come up fast, especially with distractions of COVID, lockdowns, cancelled meetings, events and NZSG Financial Woes. Because of this we haven't collected many goodies for Christmas raffles so have decided we will buy Christmas goody parcels for raffles for our Christmas lunch and quiz in December.

We also ask for you to decide and order magazines for the *Family History Magazine Round Robin* to be paid before the end of December. This service is only just breaking even, so please support the service by selecting a magazine you would like to read, & fill in the form enclosed with newsletter. We no longer have cheques for payment, so cash, teller deposit or online payment are all acceptable.

We may open the library on extra days during January. For many, January is time off from routine, and may be time to do what we love. We will email to let you know which days we will have open days. If you don't have email and wish to use the library, please ring a committee member for date of next opening.

I would like to sincerely thank all of our dedicated committee and volunteers and helpers for all the work done during the year, as well as a thank you to all of our loyal members and supporters. We are all hoping for a more 'normal' year next year, where we can actually plan events and outings, without worrying whether or not they will actually go ahead.

Wishing you all a very Merry Christmas & a Happy New Year in 2022 on behalf of all of the Committee.

As always, if you have any suggestions or comments please don't hesitate to get in touch with me or others on the committee.

Fiona Lees, Phone 021 040 8606 NZSG-CantyGroup-Newsletter@hotmail.co.nz

**NZSG NATIONAL ORGANISATION - FINANCIAL WOES**

As many of you will be aware, the NZSG national organisation is currently having financial difficulties, which the Board is now working through to overcome. All NZSG members, whether or not they belong to Branches as well, are being asked for further ideas and support to help NZSG to survive.

"There are about 60 branches and special interest groups (SIGs) associated with the NZSG. The branches are regionally based across New Zealand, and the interest groups focus on particular topics. These operate under the NZSG National rules, which specify the types of membership and the rules for branches. NZSG services are mainly provided directly to members, rather than to branches and SIGs. Our branch operates as a standalone entity, with our own bank account and funding. Our branch is registered as a charity, and is run by our own branch committee and office holders. NZSG does not provide any funding or material support to the branch." (Quoted from *New Plymouth November newsletter*, but is the same for Canterbury Branch.) NZSG national organisation is the caretaker for all the records collected by volunteers for over 50 years which have been passed on to the national organisation for the benefit of all NZSG members.

The associated branches are in discussion, & working with our NZSG national organisation who will produce a plan moving forward. NZSG national organisation has already made some cost savings but are looking for additional ideas for reducing costs and increasing revenue. One of the cost cutting measures is in the production of the magazine, *The NZ Genealogist*. It will only be available in a digital format for the remainder of this financial year, to the end of March. It has been stated that there will only be four editions, for this calendar year, not the usual six.

Branches and members have been asking and asking for more complete financial details, including cashflow, and other related information to better understand the seriousness of the situation and to better provide suggested solutions. We have also asked for more open & more frequent communication.

The NZSG national organisation is charging a levy of \$5 this year for each "Local Branch member" who is not a member of NZSG National, as a source of revenue. "Branch members" who are also members of NZSG have a NZSG membership number and pay a separate subscription to the NZSG national organisation. "Local member" is the term used by the NZSG for "local members" who belong to a Branch but do not pay a subscription to the national organisation as well. There has been a provision in the NZSG Rules for NZSG to be able to collect a levy from "Local members", but this has not been enforced until now. Our Branch, like many others, have considerable concern over the reasons for and implementation of this rule. It is divisive and unlikely to encourage additional "local members" to join NZSG national. Your Branch Committee is opposed to this levy in principle, but realise that due to the current situation, we may pay 'without prejudice' and with no commitment to making future such payments. Due to the relatively small amount, we believe paying this levy will do very little to improve the NZSG national organisation's financial situation. *(In this instance, because of the short time frame, this levy will have to be paid in bulk from Branch funds. If this levy were to continue in future years, NZSG national are expecting payment to be recovered from "local branch members".)*

The Canterbury Branch of the NZSG urgently invites feedback from its members about this proposed levy, for which payment is expected by 1st December.

Do you support / oppose / feel neutral about the proposed levy for Local members? What other points would you like to make?

Do you have suggested solutions you'd like us to feed up to NZSG national?

Please send your views to NZSG-CantyGroup-Newsletter@hotmail.co.nz

Fiona

MEMBERS' INTEREST DATABASE – Canterbury Branch is updating the members' genealogy research interests. This form is now available on our Branch website - <https://canterburygenealogy.files.wordpress.com/2021/07/membership-interest-form-2021-fillable.pdf>. A database for searching will be available on each of the branch computers - this is work in progress. We will not give your contact details outside the branch, but will send on details of enquiries to you. For those who have previously submitted changes, please check and we can correct. *Thanks to Gordy*



CANTERBURY BRANCH LIBRARY**AT PARKVIEW COMMUNITY LOUNGE - 75 QUEENSPARK DRIVE, PARKLANDS****Open: 1st & 3rd Thursday of each month from 12noon – 3:00pm &
2nd & 4th Saturday of each month from 12noon – 3:00pm.****November 2021 library dates:-**

- Thursday 4th & 18th from 12noon to 3:00pm
- Saturday 13th & 27th from 12noon to 3:00pm

December 2021 library dates:-

- Thursday 2nd from 12noon to 3:00pm
- Saturday 11th from 12noon to 3:00pm

Use your branch library - a great opportunity to have one on one help for your research and to see what resources are available for your research.

In The Library

Remember to check out the books in the library and borrow some over the Christmas break. With the recent stocktake of all the books, the updated catalogue has been uploaded to our website, so you can make your selections from home before coming in to the library to borrow. The catalogue can also be accessed on our website in PDF format - <https://canterburygenealogy.wordpress.com/branch-library/>.

Just a reminder that books can be borrowed from our library for 1 month. There are quite a few books that were borrowed several months ago (some even last year) that still haven't been returned. Please be respectful of other library borrowers and return books in a timely manner. Also, please check at home in case you have some unreturned (missing) books hiding at home. Jan Watts

Quirky Book Titles to look for in Our Library

Free Passage to Paradise Cops & Robbers Hatred Pursued Beyond the Grave What did you do in the War Mummy? A Women's Place? Woman's Place	Our Hookers of Hampshire The Dead Horse Investigation Pleasures of the Flesh Fanny Buss sketch book Blest Madman	Just the Tip of the Iceberg Black Boards & Ships Masts From Slates to Computers Candles to Computers From Boaters to Backpacks
---	--	--

Calendar for 2022 - Enclosed is a copy of our calendar with our events for next year. We have kept to much the same recipe: evening meetings 2nd Thursday of month; morning meetings 3rd Thursday of the month. We will have the library open from 12 – 3 pm on 1st & 3rd Thursdays and on 2nd & 4th Saturdays every month.

Family History Magazine Round-Robin

For many years now, Canterbury Branch has been operating a Round-Robin system for Family History Magazines, to enable our members to read some magazines & Family History Society newsletters that we subscribe to, at a reduced cost to single purchase. Many have taken advantage of this over the years, but now with rising costs, & cost of postage, our list of round-robin subscribers is dropping, making the unit price per person rise even more.

The benefit to be gained from subscribing to these newsletters & magazines is great, & at a relatively small cost compared with each person purchasing them outright & exclusively for their own use. If a person were to subscribe to one of the monthly magazines (12 copies a year), 'Family Tree Magazine' or 'Who Do You Think You Are', the cost would be less than purchasing a single copy each year.

Magazine Round Robin – Please find enclosed and return the 'Magazine Round-Robin' order form, with payment, for next year 2022.

Christchurch Heritage Festival – 9-25 October 2021

The Canterbury Branch event on Saturday 9th October at Parkview Community Lounge was cancelled due to COVID Alert Level restrictions. However, the Branch Library was open for the day from 10am to 4pm.

We were delighted to welcome a young woman with her two daughters, armed with birth certificates, to build up a children friendly family tree. We also had two visitors, who joined up as new members. So although the day wasn't as we planned, we had a good day – thank you to the willing helpers and to *Natasha* for organizing this event, and remainder of committee and library volunteers for support. Hopefully next year we won't have any restrictions.

**MEMBERS' RESEARCH INTERESTS & QUERIES AND REQUESTS FOR LOCAL INFORMATION**

Members are invited to submit a recent find, surnames or topics of interest, or to ask a question, for inclusion in this newsletter.

- **A snippet you might enjoy** - My daughter Erin with husband Simon and their girls were in Taranaki for a week of the holidays. We gave them directions to find the grave of Malcolm's 2X great Grandmother in Te Henui Cemetery in New Plymouth. They found it along with that of a great great aunt and uncle. However my granddaughter, Ilsa (11 years old) called it granny stalking!
Cheers, Lorraine Wilmshurst

- **A little curiosity** - I found and snipped this curiosity in some old family history:

Philippa wonders if the Nurse was a scapegoat for what might have been a congenital lameness? Have any of our group heard of anything similar?

Nigel Larsen & Philippa Wadsworth

Elizabeth Ann (known as Eliza) was born on the 25th August 1826, and was lame from infancy owing to a Nurse leaving her to sleep on the grass.

nigellarsen1@gmail.com

- **SMITH / DALZIEL William SMITH of Kaikoura** married Susanna DALZIEL 1892. William lived New Brighton, Burwood, died April 1936, buried Bromley. William had 5 children living at time of his death. Looking for contact
Geraldene O'Reilly, NZSG #14240 Irish.genealogy@xtra.co.nz P.O. Box 272-1456, Papakura, AUCKLAND 2244
I am a member residing outside of Christchurch unable to visit & check your library database. Thank you.

- **Fiche Readers need new home** - There are currently available TWO Fiche Readers desiring of new homes. These are of simple types as seen in our library. Advertising same for disposal (or donation?). *Cheers, Barry Pycroft.* barry@pycroft.co.nz

- **1921 Census online publication date announced** - The National Archives - Great news!
<https://www.nationalarchives.gov.uk/about/news/1921-census-online-publication-date-announced/>

Jenny Mayne

SNIPPETS - Some bits & pieces of interest and some to help you with your research:

- **From the Branch Indexing Team** - another interesting book has been completed for the *NZSG Kiwi Collection* & our *Canterbury Branch Book Index: The Sons & Daughters - Tales of the MacFarlanes, Farmers of North Canterbury* author Shona McRae. It is the history of the 11 children of Catherine née CAMERON & John MACFARLANE, immigrants from Scotland. The author kindly donated the book to our Branch & Carole Jackson has indexed the book which has family trees, people & homes photos of good quality. If you have an interest in Canterbury NZ families please check the index which is on the computers in our Branch library. If you are unable to visit the Branch library drop us a line either by email or letter & we will arrange for the index to be checked.
Kathy Bisman #NZSG 5517
- **Helping You with Your Family History:** Turanga (Christchurch City Library) 60 Cathedral Square - note Turanga will be open Show Day Friday 12th November 10am-5pm. The library has 'allsorts' up to date electoral rolls, telephone books & a special item is the newspaper *The Canterbury Times 1865-1917* - their website says 'This was the *Lyttelton Times*' answer to the *Weekly Press*. It was published weekly. If any members have used this paper please share with us - a write up about what you found would be appreciated for the newsletter.
- **Christchurch Cemeteries database:** The website www.heritage.christchurchcitylibraries.com/cemeteries is updated monthly by the Cemeteries Administrator of Christchurch City Council. Remember it is only for the cemeteries that are owned by the City Council. If you cannot locate a person, think, could they have been cremated or perhaps in a churchyard or private family cemetery or even a Urupa or totally gone out of the area. Most NZ Cities & Districts have cemetery databases. See the NZSG website for NZ cemetery details.
Kathy Bisman #NZSG 5517
- **Airforce Museum of New Zealand** - Wigram Christchurch www.airforcemuseum.co.nz
45 Harvard Avenue, Wigram open daily 9.30am - 4.30pm; Phone 343-9532
This museum which opened in 1987 holds the national collection of the Royal New Zealand Air Force (RNZAF). Their Collections & Research departments are currently closed until January 2022. This is due to a backlog of new additions to the collections department. You can keep updated with them via their blog, Facebook or subscribe to the newsletter.
- **Sumner Museum** - the new museum has opened in the Sumner Community Centre & Library - location 14 Wakefield Avenue, Sumner. They hold archives from 1851 which include diaries, photos, painting & World War II records of the fortress area. Their contact is sumner.museum@xtra.co.nz or you can phone Mrs Rule 384-1159. The Sumner-Redcliffs Historical Society provides a regular newsletter.
Kathy Bisman #NZSG 5517
- **'Connections' Oral History Hui** - The organising committee for the *Connections oral history hui*, a hui organised by the South Island group of NOHANZ, the *National Oral History Association of New Zealand*, wanted to let your members know about this event on November 27th at Turanga, Ōtautahi / Christchurch. There is an attached flyer about the event with email newsletter delivery. We would love to see some members of your group at the event! Please get in touch if you have any further questions about the hui.
Louise Tapper, www.collaborative.org.nz email: louise.tapper@gmail.com
- **Ancestry.com free access has been extended** until the end of December 2021. Free access to *Ancestry* from home via the Christchurch City Libraries website, using your library card number & password, has once again been extended & is now available until the end of the year. <http://christchurchcitylibraries.com/eResources/Ancestry/>
- **Hawarden Museum** (run by Waipara County Historical Society) will be open to the public on the last Sunday of each month. 1:30 - 3pm. Entry fee \$2.00. For more information please contact Vaughan Armstrong (03) 314 4254. *Kathy Bisman*
- **Canterbury Museum Exhibition - Standish and Preece: Christchurch Photographers, 1885–2020** - See photos from NZ's longest-running photography business, with a window on 135 years of life in Canterbury. When: 9 Jul 2021 to 6 Feb 2022, 9am to 5pm; Where: Canterbury Museum, Rolleston Avenue, Christchurch Central
Free event: <https://www.christchurchnz.com/see-do/events/standish-and-preece-christchurch-photographers-1885-2020>
Online Collections - <https://collection.canterburymuseum.com/explore#>, select Standish & Preece.
- **Margaret Stoddart, Garden Scene exhibition** - Margaret Stoddart and Kate Sheppard were enrolled together at the Canterbury College School of Art in its opening year of 1882 - their names listed together in the morning class roll book. Courtesy of the University of Canterbury's Macmillan Brown Library, this roll book, and six of Stoddart's garden themed watercolours are available for viewing in the exhibition space at Te Whare Waiutuutu Kate Sheppard House until Sunday 12 December 2021. Bookings recommended during Alert Level 2 as space within the exhibition is limited. Open 10am-4pm Wednesday to Sunday. <https://www.ccc.govt.nz/news-and-events/whats-on/event/margaret-stoddart-garden-scene>
<katesheppardhouse@heritage.org.nz> 03 341 1360 www.katesheppard.co.nz *Thanks to Kathy Bisman*
- **Margaret Stoddart's Godley House - Katharine Watson:** - Thursday 21 October 2021
Archaeological consultant and doctoral candidate, Katharine Watson, presents an illustrated talk on the archaeology of Margaret Stoddart's former family home at Godley House, Diamond Harbour. Demolished following the Canterbury earthquakes, Godley House was a much-loved landmark and destination for generations of Cantabrians. Katharine will apply her recent research to the archaeological record to demonstrate how analysis of nineteenth-century buildings can reveal often untold women's stories. <https://www.ccc.govt.nz/news-and-events/whats-on/event/katharine-watson-margaret-stoddarts-godley-house>
<katesheppardhouse@heritage.org.nz> 03 341 1360 www.katesheppard.co.nz *Thanks to Kathy Bisman*

CITIZEN'S WAR MEMORIAL

If you have been through the Square recently you will be aware that the Citizen's War memorial is no longer next to the Cathedral. It has been removed.

In 1943 the association that built the memorial was wound up and the memorial was gifted to the Cathedral's Dean and Chapter and placed on church land with the proviso that if the church ever needed the land, it could be shifted.

The land is required for the development and restoration of the cathedral so the memorial has been gifted to the Council and will be placed on Council land in the Square.

The memorial has been dismantled and removed. First the six bronze pieces were detached and lifted away by crane and then gradually the bronzing and Portland stone work has been removed off site. While all these pieces are off site they will be cleaned and repaired by craftsmen and heritage people ready for reinstatement on the new site.

From Lorraine Wilmshurst, From the June – August, Anglian Life magazine.

https://en.wikipedia.org/wiki/Citizens%27_War_Memorial

<https://newsline.ccc.govt.nz/news/story/citizens-war-memorial-on-the-move>



MEETING REPORTS

Thursday Evening Meeting - Family Photographs and Stories

We will remember this period as the 'masked days' where mask wearing is mandatory in many situations.

Helen brought in a wonderful 1906 album, needing to find a home for family pictures and found Deborah at the meeting had connections with these people. Others shared some research finds and challenges.

Seven members spoke to the group about photos of their ancestor displayed at the meeting.

Deborah Williams spoke on Benjamin Ramskill BEST, born 1848 in Leeds, England, and showed us his mugshot. He emigrated to NZ with his wife and 4 children in 1879, then he abandoned his family and disappeared to Australia. Here Benjamin met Bertha MUGG who had 2 sons by him. He was sentenced to 9 months prison in 1894 for embezzlement. Bertha Mugg died in 1898, and Benjamin left Adelaide in 1903 on a ship bound for London, but died in 1904 in East London, South Africa.



Lorraine Wilmshurst spoke on her husband Malcolm's ancestors Alziers and William Gordon BELL, and their son James, who arrived in May 1840 in Wellington. Alziers was born on Bellevue estate in Grenada, West Indies. Her mother was a slave and her father an estate owner. Photos of Alziers show her Afro-Caribbean origin, and Lorraine found several photos of her in museum collections.



Alastair Downey spoke on a photo of the Lady Barkly engine locomotive. His ancestor John MURDOCH started a sawmill 3 miles north of Winton and used this locomotive to drive the sawmill. It had pulled the first train on the first railway from Invercargill to Makarewa in August 1863. The settlement of Lady Barkly is named after the locomotive.



Fiona Lees spoke on her great great grandparents Marie Louise Madeleine DUBELLOY and Bruce SHEPHERD, who went to live in Hong Kong, where he worked for the Colonial Office, for 20 years until he retired to England about 1900. He produced a 270 page Hong Kong Almanac in 1891, and later he was awarded the Imperial Service Order.



Cathy Henderson spoke on Mary STEVENS born 1878 died in 1902. Cathy, as a child, would ask her mother who was the lady in the photograph, which hung on the wall of their home. Her mother would say "she's aunty Mary. Now do your homework!"



The lady was in fact Cathy's grandmother, Mary Stevens, born in Ashburton, one of 13 children. Mary left for Dunedin and married Edward BEACH there in 1900. He was already married and disappeared shortly afterwards. Mary returned to Ashburton, worked in a boarding house, and found she was pregnant. She died in May 1902 after consuming phosphorus to induce labour.



Jenny Mayne spoke about a group photograph taken on New Brighton beach about 1905-06. In it was her great grandmother Mary Dora DEACON. This ancestor was unknown to her until DNA tests revealed matches with the BALLANTYNE family. Dora Deacon married Thomas Ballantyne, and they purchased a 60 acre farm in Waimairi Road. Dora joined the WCTU (Woman's Christian Temperance Union) and was Christchurch branch president in 1894.

Martin Clifford spoke to a large, framed photograph of his grandfather, Edward Vernon ADAMS in army uniform. He was given the original photograph by his maternal uncle in Australia, who had claimed he had nothing of interest to show Martin. Edward ADAMS enlisted in the Australian Imperial Forces in July 1915 aged 26 years. He was then a miner from Avoca, Tasmania. He took part in the evacuation of Gallipoli in December 1915, and was then posted to the Somme on the Western front, where he was killed in action 10 days later. A war pension of 4 pounds 15 shillings per fortnight was paid to his widow.



Thank you to all the members who stood up and told special stories of their family photographs.

Thanks to Philip Creed for report.

Thursday Morning Meeting - Ngāi Tahu Archives



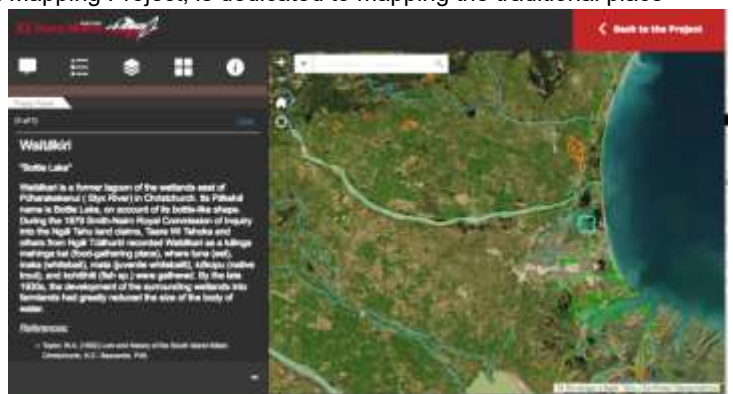
Takerei Norton spoke to us about the Ngāi Tahu Archives now held physically at Archives New Zealand at Wigram (access by appointment), and digitally on a couple of websites. These sites are well worth a look for their information on South Island historical sites and travel routes. The Ngāi Tahu Archive Team is working towards the development of a fully integrated Ngāi Tahu search engine connecting internal and external repositories of Ngāi Tahu knowledge.

Online access to information is through projects such as Kā Huru Manu, our Ngāi Tahu atlas www.kahurumanu.co.nz, and Kareao, our archives database www.kareao.nz. Kareao gives access to manuscripts, photographs, maps, biographies, oral histories, taonga, and audio-visual material.

Kā Huru Manu, The Ngāi Tahu Cultural Mapping Project, is dedicated to mapping the traditional place names and associated stories within the Ngāi Tahu rohe (tribal area). The green dots are sites with narrative and references to that name.

Traditional travel routes are also mapped. The present-day State Highway One on firm ground was the major route along the east coast. Every river is a trail of some description with a few

passes up through the high country, which was accessed mainly over summer and food stored for winter.





← In 1896 the District Surveyor Thomas Brodrick was sent to Waihou near Waimate to see the well-known Ngāi Tahu leader Rāwiri Te Maire. He gave really detailed descriptions of each place name. → This map of Māori place names is based on that information:

<https://kareao.nz/>

Takerei has kindly donated a copy of the *Tangata Ngāi Tahu People of Ngāi Tahu* book to our library. This book and other publications, which are their recommendations for best sources of information, are available at the Ngāi Tahu book store on website <https://ngaitahu.iwi.nz/shop>.

Thanks to Sue Knight for report.



NZ HISTORY – DATES IN NZ HISTORY FOR NOVEMBER – <https://nzhistory.govt.nz/calendar/11>

TODAY IN NZ HISTORY

Old-age Pensions Act becomes law - 1 November 1898 - 123 years ago

The Act gave a small means-tested pension to elderly people with few assets who were 'of good moral character'. This was the first in the world funded from general taxation. It was one of the major achievements of Richard Seddon's Liberal government. Proof was required that the applicant was aged at least 65, which disadvantaged the many Māori whose births had not been registered. Applicants had to have lived in New Zealand for the previous 25 years; Chinese people were specifically excluded. <https://nzhistory.govt.nz/old-age-pensions-act-passes-into-law>

Polish refugees land in New Zealand - 1 November 1944 - 77 years ago

Over 800 Polish refugees seeking safety from war-torn Europe disembarked in Wellington. For the 733 children and 102 adults it was the end of a long & perilous journey. They had survived deportation to the Soviet Union, forced labour in Siberia & evacuation to the Middle East. In 1943 a group of Polish children were invited to come to New Zealand for the duration of the war. A camp for the children – dubbed 'Little Poland' – was established near Pahiatua in Wairarapa. Most of the refugees chose to settle in New Zealand after the war. Relatives joined some of them in the late 1940s, while a small number returned to Poland. <https://nzhistory.govt.nz/page/polish-refugees-land-new-zealand>

New Zealand becomes first country to adopt a standard time - 2 November 1868 - 153 years ago

At noon, all the clocks in New Zealand that were connected by telegraph to Wellington, or were regulated by a clock that was, struck 12 at the same moment. It was a brief moment of unity for a colony less than three decades old and divided by internal conflicts, not least the wars currently raging on both coasts of the North Island. Two months to the day earlier, the House of Representatives had resolved 'that New Zealand mean time be observed throughout the Colony'. Government scientist James Hector had subsequently recommended that New Zealand clocks be set 11½ hours ahead of Greenwich Mean Time (the time in London).

<https://nzhistory.govt.nz/page/new-zealand-becomes-first-country-adopt-standard-time>

New Zealand Division liberates Le Quesnoy - 4 November 1918 - 103 years ago

By early November 1918 Germany stood alone against the Allies. The German army was still resisting on the Western Front, & the New Zealanders' capture of the walled northern French town of Le Quesnoy was a bold feat of arms. The New Zealand artillery could not bombard Le Quesnoy heavily because of the number of civilians in the town. The Germans inside Le Quesnoy would not surrender. The 4th Rifle Battalion placed a 9-m ladder against the town's wall, & scaled the ramparts. The 2nd Rifles entered the town & the garrison surrendered. Nearly 2,000 prisoners & 60 field guns were captured in a last major action of the war. <https://nzhistory.govt.nz/page/new-zealand-division-liberates-le-quesnoy>

Invasion of pacifist settlement at Parihaka - 5 November 1881 - 140 years ago

About 1,600 troops invaded the western Taranaki settlement of Parihaka, which had come to symbolise peaceful resistance to the confiscation of Māori land. Founded in the mid-1860s, Parihaka was soon attracting dispossessed and disillusioned Māori from around the country. On 5 November, about 1,600 volunteers and Constabulary Field Force troops marched on Parihaka. Several thousand Māori sat quietly on the marae as singing children greeted the force led by Native Minister John Bryce who ordered the arrest of Parihaka's leaders, the destruction of much of the village and the dispersal of most of its inhabitants. <https://nzhistory.govt.nz/occupation-pacifist-settlement-at-parihaka>

The Acheron arrives to survey New Zealand waters - 7 November 1848 - 173 years ago

The paddle-wheel sloop was one of the first steamships in New Zealand waters. Under the command of Captain John Lort Stokes, *Acheron* surveyed the coastlines of Cook Strait and the South Island until March 1851. Its powerful engine was especially valuable on dangerous shores such as the West Coast of the South Island. Until the *Acheron* survey, which was completed by HMS *Pandora* in 1855, the only comprehensive charts of the New Zealand coast were those published after Captain James Cook's 18th-century voyages.

<https://nzhistory.govt.nz/the-acheron-arrives-to-survey-new-zealand-waters>

Armistice Day - 11 November 1918 - 103 years ago

The 11th hour of the 11th day of the 11th month was the moment when hostilities ceased on the Western Front in 1918, following the signing of an armistice. The signing of the armistice between the Allies and Germany was celebrated in many cities and towns around New Zealand. Enthusiasm was dampened, however, by the ongoing impact of the influenza pandemic that was ravaging the country.

<https://nzhistory.govt.nz/armistice-day>

Last Post on YouTube - <https://www.youtube.com/watch?v=EDS3TtGaQ0>

Troopship Awatea goes down fighting - 11 November 1942 - 79 years ago

The Union Steam Ship Company of New Zealand's sleek 13,482-ton trans-Tasman liner *Awatea*, launched in 1936, was one of the finest and fastest ships of its size in the world at the outbreak of the Second World War. Like many merchant vessels, the liner was given a coat of grey paint, fitted with defensive guns and pressed into wartime service as a troop transport – still manned by its civilian Merchant Navy crew. On 8 November 1942 the *Awatea* took part in *Operation Torch*, the successful Allied invasion of Morocco and Algeria. After landing 3,000 commandos near Algiers and ferrying other troops further to the east, the ship was attacked by German and Italian aircraft off Bougie (Bejaia) on Armistice Day. The *Awatea* was raked by bombs and holed by aerial torpedoes. Remarkably, everyone on board escaped safely. The abandoned, burning hulk was later sunk by an Italian submarine. It was a sad end for a ship often described as the finest ever to fly the New Zealand flag.

<https://nzhistory.govt.nz/page/troopship-awatea-goes-down-fighting>

Kaikoura Earthquake – 14 November 2016 – 5 years ago

<https://www.stuff.co.nz/national/nz-earthquake/87596704/before-and-after-the-kaikoura-quake-images-show-colossal-damage>

First issue of Otago Daily Times published - 15 November 1861 - 160 years ago

Dunedin became the first New Zealand town with a daily newspaper when the first issue of the *Otago Daily Times* was published. The English-born Julius Vogel (who later became premier of New Zealand) had been recognised as a talented journalist in Victoria before arriving in Dunedin, which was gripped by gold fever. He soon formed a partnership with William Henry Cutten, editor of the weekly *Otago Witness*. To this day, the newspaper provides comprehensive coverage of the region and advocates regional causes. Vogel left the newspaper in 1868 in order to focus on his political career. <https://nzhistory.govt.nz/page/first-issue-otago-daily-times-published>

New Zealand officially becomes British colony - 16 November 1840 - 181 years ago

New Zealand officially became a separate colony within the British Empire, severing its link to New South Wales. North, South & Stewart islands were to be known respectively as the provinces of New Ulster, New Munster & New Leinster. William Hobson had been appointed Britain's consul to New Zealand in 1839. On 21 May 1840 Hobson proclaimed British sovereignty over all of New Zealand.

<https://nzhistory.govt.nz/letters-patent-issued-making-new-zealand-a-colony-separate-from-new-south-wales>

41 die in Ballantyne's fire - 18 November 1947 - 74 years ago

The fire in Christchurch's prestigious department store was the deadliest in New Zealand's history. When the fire began in a basement about 3.30 pm, 250–300 people were shopping at Ballantyne's, which had a staff of 458. The staff member who saw smoke coming from a stairwell asked a colleague to call the fire brigade. Tragically, the brigade did not log this call. By the time firefighters arrived at 3.48 – ill-equipped to tackle anything more than a fire in a cellar – the blaze was out of control. However, staff on the ground floor assumed the fire could be contained and no general evacuation was ordered. Staff returning from a tea break were told to go back to work, and customers entered the store as late as 3.56pm. As the smoke thickened, individual staff members cleared their areas, and all customers and most staff escaped. But the 'millinery girls' and those working in credit and accounts were trapped. Thirty-eight staff and two auditors perished in the fire, and a pregnant staff member jumped to her death.

<https://nzhistory.govt.nz/41-die-ballantynes-fire>

Pike River mine explosion kills 29 - 19 November 2010 - 11 years ago

The Pike River underground coal mine is located in the rugged Paparoa Range, on the West Coast of the South Island. The mine workings were reached via a 2.3-km-long tunnel that intersected with the Brunner coal seam. At 3.44 p.m. on Friday 19 November 2010, the mine exploded. Twenty-nine men underground died immediately or soon afterwards from the blast or because of the toxic atmosphere this generated. Two men who were some distance from the mine workings managed to escape. After three further explosions over the next nine days, the mine was sealed.

By Simon Nathan <https://nzhistory.govt.nz/pike-river-mine-explosion-kills-29>

Mass murder in the Bay of Islands - 20 November 1841 - 180 years ago

Maketū Whareōtara, the 17-year-old son of the Ngāpuhi chief Ruhe, killed five people at Motuarohia in the Bay of Islands. In March 1842 he became the first person to be legally executed in this country. Maketū worked on the farm of a widow, Elizabeth Roberton. His killing spree began when he attacked another farm worker, Thomas Bull, with an axe while he slept. Maketū went on to kill Roberton, her two children, & Isabella Brind, a granddaughter of the Ngāpuhi chief Rewa who lived with the Robertons. Maketū killed his victims because he believed they had offended his mana. Bull had been verbally & physically abusive towards him, & Mrs Roberton had sworn at him. Maketū did not explain why he had killed the two children & Isabella; it was perhaps this last killing that sealed his fate. <https://nzhistory.govt.nz/mass-murder-in-the-bay-of-islands>

Freyberg given command of 2NZEF - 22 November 1939 - 82 years ago

British-born but New Zealand-raised, Lieutenant-General Sir Bernard Freyberg was a charismatic and popular military leader who later served as governor-general. Freyberg was awarded numerous honours, including the Victoria Cross, during the First World War. Having retired from the British Army because of a heart problem in 1937, Freyberg offered his services to the New Zealand government when the Second World War began. Appointed to command the 2nd New Zealand Expeditionary Force (2NZEF), he led its fighting arm, 2 New Zealand Division, through campaigns in Greece and Crete, North Africa and Italy. Following the war, Freyberg was invited to be New Zealand's governor-general. A popular choice for the post, he was the first person with a New Zealand upbringing to hold the position.

<https://nzhistory.govt.nz/bernard-freyberg-assumes-command-of-the-nz-expeditionary-force>

Influenza pandemic reaches peak mortality - 23 November 1918 - 103 years ago

No other event has killed so many New Zealanders in such a short time as the 1918 influenza pandemic. The second and more deadly wave of a new strain of influenza arrived in New Zealand in October 1918. By the end of the year around 9,000 people across the country had died. Half as many New Zealanders lost their lives in little more than two months than during the entire First World War, and worldwide the pandemic was responsible for at least 50 million deaths.

At the time, many believed that the virus had arrived on board RMS *Niagara*, which berthed in Auckland on 12 October 1918 after sailing from Vancouver & San Francisco. But this is no longer thought to be the case. Historian Geoffrey Rice's analysis of death certificates revealed that peak mortality in New Zealand probably occurred on 23 November – six weeks after the arrival of the *Niagara*, & several weeks later than would have been expected if the vessel had brought the virus, given its incubation period.

The exact details of the flu's arrival in New Zealand remain a mystery. However, it was a NZ passenger & cargo ship, the *Talune*, which was responsible for bringing influenza to Samoa on 7 November. Seriously ill passengers were allowed ashore without quarantine & the virus spread quickly. Between one-fifth & one-quarter of the population died as a result, the highest death rate anywhere in the world.

In New Zealand ordinary life ground to a halt as the pandemic peaked. Schools & many workplaces shut down, & towns & cities set up depots to coordinate relief efforts. Preventative measures included restricting the opening hours of public facilities & postponing or cancelling events that would have brought large numbers of people together – including Auckland's celebration of the armistice with Germany.

Māori were particularly affected by the flu, with a death rate more than eight times that for Pākehā.

Military camps and some small towns, such as Nightcaps in Southland, had disproportionately high numbers of deaths. The flu was unusual in that healthy adults had a higher mortality rate than the young and the old. A particularly distressing consequence of infection was that it turned the skin of some of the victims purple–black. This was due to pneumonia, which attacked the lungs after the initial infection and was responsible for most of the deaths.

The pandemic declined rapidly after reaching its peak. In its aftermath the government set up a royal commission which resulted in Robert Makgill's 1920 Health Act, considered a model piece of legislation at the time. A number of memorials to pandemic victims were erected around the country, including to Māori victims and to the doctors and nurses who lost their lives. Among them was a monument to Margaret Cruickshank, New Zealand's first female doctor. Influenza continues to be a significant public health issue in New Zealand, affecting up to 20% of people each year and causing some deaths.

<https://nzhistory.govt.nz/influenza-pandemic-reaches-peak-mortality>

Women vote in first general election - 28 November 1893 - 128 years ago

New Zealand women went to the polls for the first time, just 10 weeks after the governor, Lord Glasgow, signed the Electoral Act 1893 into law, making this country the first in which women had the right to vote in parliamentary elections. Despite the short timeframe for voter registration, 109,461 women – about 84% of the adult female population – enrolled to vote in the election. On polling day 90,290 of them cast their votes, a turnout of 82% (far higher than the 70% turnout among registered male voters). <https://nzhistory.govt.nz/page/women-vote-first-general-election>

257 killed on Mt Erebus - 28 November 1979 - 42 years ago

On the morning of 28 November 1979, Air New Zealand Flight TE901 left Mangere airport, Auckland, for an 11-hour return sightseeing flight to Antarctica. At 12.49 p.m. (New Zealand Standard Time), the aircraft crashed into the lower slopes of Mt Erebus, killing all 257 passengers and crew. It was the worst civil disaster in New Zealand's history.

<https://nzhistory.govt.nz/257-killed-in-mt-erebus-disaster>

Vaccines that changed your life
1796 smallpox
1885 rabies
1890 tetanus
1896 typhoid fever
1906 TB
1923 diphtheria
1926 whooping cough
1932 yellow fever
1937 flu
1952 polio
1963 measles
1967 mumps
1969 rubella
1974 chickenpox
2021 COVID-19

COVID-19 Preparedness: Remember to:

- Look after ourselves and each other, protect our way of life. Please do not join us if you are feeling unwell.
- Either Scan the QR code (perhaps at the beginning and end of the meeting) OR note our whereabouts that day in our COVID 'Diary', however we do it.
- Mark attendance sheet and library visitor book.
- Masks are mandatory inside, social distancing 1 metre apart
- Sanitise our hands as we go into the hall or meeting room, before we get our cuppa & biscuit & as we leave



WHERE TO NEXT WITH YOUR DNA RESULTS?

DNA has become an important tool in our toolbox for many. If you have questions or have hit a brick wall, contact Bruce Holm (bruce.holm@gmail.com) or Barry Pycroft (barry@pycroft.co.nz or phone: +64-3-942-8417). There is also a DNA & Genealogy drop-in session at Shirley library on the 1st and 3rd Saturday each month, from 10:00am to 12noon (book through Shirley Library, phone 941-7923) that may help you solve the problem, and also ask for help at our Branch Library.



From NZSG Website:-

What is a Genealogy DNA Test?

A genealogical DNA test could help you find genetic relatives and expand your genealogy research. It is another tool you can use to find family members who know more about your family. It does not replace your paper research - it's another set of data.

For more introductory information on the types of DNA tests, have a look at [DNA Basics](#), part of the *Getting It Right Series*.

The International Society of Genetic Genealogy ([ISOGG](#)) is the authoritative site on all things to do with DNA testing for Genealogy.

Their [Wiki](#) has a huge amount of useful information, including for those new to DNA testing.

Why Test?

It is important to know what you want to get out of doing the DNA test. DNA does not lie and some people get unexpected results which become life-altering.

Who to Test?

Most people test themselves. There are other people in your family who can improve the information you can receive from DNA testing.

Always ensure that family members are fully informed and give willing consent before doing a DNA test.

- Your parents (or grandparents) - you only inherit half of your parents' DNA. Testing them will get you all of their DNA.
- The oldest person available in your family such as (great) aunts and (great) uncles. Aunts and uncles will have a different set of DNA to you. Like your parents, they will have more DNA from their parents than you will have.
- Your siblings - they will have inherited a different set of DNA from your parents (unless you're identical twins).

Acknowledged - From public pages of NZSG Website, look on website to see more - <https://genealogy.org.nz/DNA/11167/>

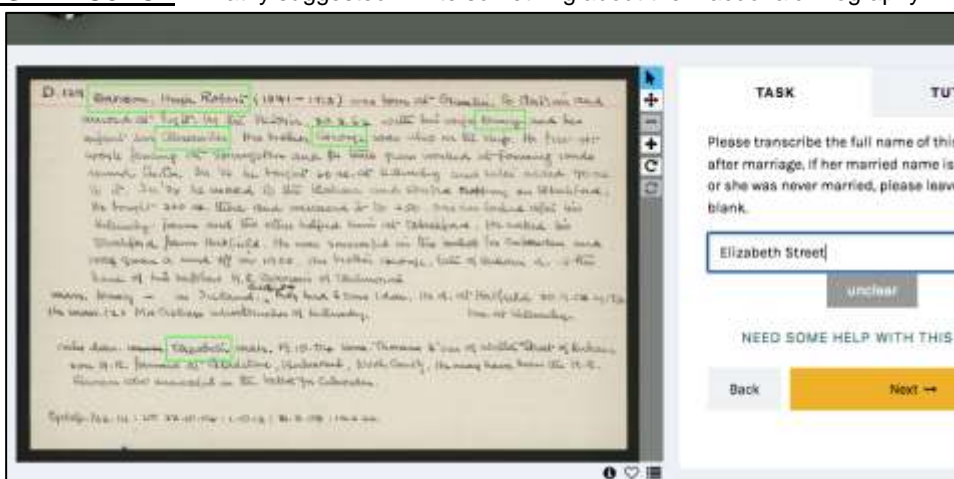


MACDONALD BIOGRAPHY ZOONIVERSE PROJECT - Kathy suggested I write something about the Macdonald Biography

Zooniverse project for the newsletter, maybe we could do a group session blitzing through the cards at some stage ...

A reminder about the *The G R Macdonald Dictionary of Canterbury Biography* project on Zooniverse. It relies on volunteers to identify names and lifespans from hand-written index cards. You are presented with a card and then draw a box around each name you can see on it and identify birth and death years if possible. Extra information can be added as comments.

The G R Macdonald Dictionary of Canterbury Biography project is a collaboration between Canterbury Museum and the University of Canterbury's Arts Digital Lab.



<https://www.zooniverse.org/projects/christophertomson/macdonald-dictionary/about/research>

George Ranald Macdonald (1891 - 1967) was a farmer and local historian in Canterbury, New Zealand. After retiring, between 1952 and 1964, he compiled a biographical dictionary of colonial personalities, comprised of over 12,000 hand-written index cards with biographical information on over 22,000 people.

While a monumental achievement, one of the dictionary's weak spots has been a lack of information on women and children. Most of the entries are organised by male heads of household with women relegated to the role of wife or daughter. In an effort to make women and children more easily findable, a joint public history project between Canterbury Museum and the University of Canterbury is underway. The aim is to tag all the names mentioned in the dictionary.

The *G R Macdonald Dictionary* is currently available in its entirety through Canterbury Museum's website. Eventually the additional names transcribed by project volunteers will appear under the Associated Person heading for each index card. *Thanks to Sue Knight*

PHOTO OF JAMES PENTENEY WANTED

The St Albans History Group are looking for a photo of James PENTENEY (1832 – 1917), to complete a set of photos of the mayors of the Borough of St Albans in the Community Centre. James was mayor of the Borough of St Albans in 1895 and a councillor from about 1885 to 1898. He was also involved in other community activities around that time. This includes the St Albans and Stanmore Political Association, The St Albans Mutual Improvement Association and The St Albans Licensing Committee. He was a policeman until 1879. He and his wife (Elizabeth Jane HAYMAN) had one daughter but no grandchildren. Elizabeth's sister Emily Ann married Richard NORRIS and came to New Zealand in 1858. They settled in Lyttelton. Some of their descendant's names include DYER, REESE, DONNELLY, NORRIS, PAULSON, HUGGINS, THOMAS and IPSEN. Some lived in Ashburton and Timaru. Perhaps one of these relatives may have a photo of him.

If anyone can help or know of any archives where it could be, could you please contact Philippa Wadsworth, phone 021 0648861 or email pkandng@gmail.com.



BISHOPDALE BRANCH

NEXT MEETING (COVID-19 Alert Level restrictions allowing):

Date, Time, Place: Thursday 25th November, 7:30 p.m. at St Margaret's Hub, 94 Farrington Avenue.

Topic: Sharing of Stories Relating to Family Memorabilia

Speaker: IN HOUSE

Members are asked to bring along a keepsake item that has special family memories and to share their stories with others; (items such as, but not limited to, photos, silver, toys, china, ornaments, boxes, books, jewellery, clothing and tools, etc.)

Being the last meeting for the year, refreshments will be served during the evening.

All welcome. Visitors are most welcome, for whom there will be a \$3 door charge.

Regards Christina Carroll

Convenor: Frances Cadman Phone: 352-5605 Branch Email: bishopdale@genealogy.org.nz
Newsletter Contact: Christina Carroll View our branch library catalogue at <https://www.librarything.com/catalog/bishopdalenzsg>

Waimakariri Genealogy Branch

WAIMAKARIRI BRANCH

Monthly General Meeting dates are held on the third Tuesday of each month from January to November. Usually there is a Guest Speaker followed by a light supper. There is no charge for these evenings.

Next Meeting: Date: Tuesday 16th November 2021 at 7.30pm (COVID-19 Alert Level restrictions allowing):

Topic: For the final meeting of the year we will have a quiz night and finger food for supper.

Raffles and cuppa AFTERWARDS.

Venue: Waimakariri Branch, Rangiora Brass Band Rooms, Northbrook Road. All Welcome.

Thanks to Christine Pearson

Convenor: Gordon McIvor Phone: (03) 327-3331 Email: gordandpaul@xtra.co.nz
Email: Waimakariri@genealogy.org.nz **Newsletter Contact:** pearsonchristine8989@gmail.com

1921 England and Wales Census

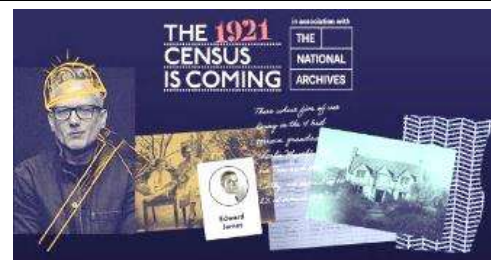
FindMyPast (FMP) have announced that the 1921 England and Wales Census will be released on their website on 6 January 2022 (UK time so really the 7th for us). Quite amazingly, despite Covid-19, it is being released on time!

The 1921 Census will not be immediately available within any subscription. It will only be available via pay-per-view access for the initial period. This will cover the cost of digitising and transcribing the 18,235,242 images created from the records supplied exclusively to FMP by The National Archives.

It will cost £2.50 for every record transcript and £3.50 for every original record image. For all 12-month Pro subscribers, there will be a 10% discount on any 1921 Census purchases. You will only be able to access the Census at this point from personal accounts, not library editions. This is to keep your credit card information secure.

Further information can be found on FindMyPast's website, including a fascinating video of the digitisation process.

For those of you with family further north, the National Records of Scotland's website say the 1921 Scotland Census will be released in "the latter half of 2022. We'll keep you updated on progress via our digital channels." NZSG e-KIT # 167, 29 October 2021



New Zealand (Aotearoa) on the Air: 100 Years of Radio

New Zealand's first radio broadcast took place on 17 November 1921. From 13-21 November this year, RNZ is going to be celebrating radio in this country - the milestones, what it means to us today, and the unforgettable moments and memories.

RNZ wants to hear from you about your radio memories – the breaking news moment you'll never forget, that political interview, or the time that you discovered your favourite band when they played on Afternoons with Jesse Mulligan. What will we do with these memories? Some of them will end up being aired on RNZ or published on rnz.co.nz.

You can send us your memory by filling in the form below, or by emailing an audio file to 100years@rnz.co.nz. Please make sure you include: Your name and where you live, your radio memory and why it has stuck in your mind. Please keep your recording to under a minute if possible. <https://www.rnz.co.nz/stories/2018817175/100-years-of-radio> https://en.wikipedia.org/wiki/Radio_in_New_Zealand



Newspapers – 1,000s Available Free to Search Through Google – "I've just discovered that Google has digitised 1000's of newspapers around the world & free to search <https://news.google.com/newspapers> so just in case you didn't know about it I thought I'd share." From Trisha Dunn on [NZSG Members List]. And the following from Barry Pycroft on [NZSG Members List] – "If one can get through the hundreds of American & Canadian publications, see here for Australia. **The Sydney Morning Herald** - 38,755 issues. 3/Apr/1830 – 31/Dec/1989. **The Age** (Melbourne) - 32,807 issues. 17/Oct/1854 – 31/Dec/1989. Oh, the reading! Now for some searchable OCR!!"

COMMITTEE 2021 / 2022

Convenor	Fiona Lees	021 040 8606	NZSG-CantyGroup-Newsletter@hotmail.co.nz
Treasurer	Pauline Noonan	329-1724	nanapauline46@gmail.com
Minute Secretary	Sue Knight	022 084 4593	sknights@xtra.co.nz
Secretary	<i>vacant</i>		
Newsletter Editors / Membership	David & Fiona Lees	349-9431	NZSG-CantyGroup-Newsletter@hotmail.co.nz
Speaker's Convenor	Lorraine Wilmshurst	358-5824	malcwilms@gmail.com
Technology Guru	Gordy Collingwood	383-0834	gdc@xtra.co.nz
	Philip Creed	365-9101	philipcreed@xtra.co.nz
	Alastair Downey	358-8822	a.downey@xtra.co.nz
	Clare Simpson	383 0683	claresimpson@xtra.co.nz
	Natasha Wells	027 688-0211	natashawells552@gmail.com
Other contacts:			
Librarian / Library / Webmaster	Jan Watts	595-5431 or 021 296-6399	janwatts@outlook.co.nz
Family history magazines	Maureen Kelso	329-5251	m_kelso@xtra.co.nz
School register project	Sandra Serra	349-3806	serrals@xtra.co.nz
School rolls research	Rae Wilson	358-7982	wil.fam@xtra.co.nz
European Interest Group	Kathy Bisman	(03) 314-4114	kathmark5354@gmail.com
Australian Interest Group	Atholin Pierre	376-6367	atholin.g.pierre@gmail.com
Computer Interest Group	Fiona Lees	021 040 8606	NZSG-CantyGroup-Newsletter@hotmail.co.nz
Irish Interest Group	Tony Gordon	338 3052	cnxns64@gmail.com
WWI Project - War Memorials / Boards of Honour	Evelyn Robertson	331-8204	robertsona@xtra.co.nz

BEST WISHES TO ALL OF OUR MEMBERS – keep safe & warm, be kind to others and yourself.

We wish a warm welcome and happy researching to our new members Pam O'HARA, Theresa NORRIS & Elizabeth TAIAROA.

**Wishing a Merry Christmas & a Happy New Year to
all our members and Genealogy Friends**

[New Zealand Society of Genealogist's Website:- http://www.genealogy.org.nz](http://www.genealogy.org.nz)

Please let us know if you are shifting or have changed address, or email address, so we can keep our records current, & keep in touch.
Apologies for any errors & omissions in newsletter. Corrections & additions welcome. Photograph credits – David Lees.

NZSG CANTERBURY BRANCH LIBRARY HOURS

**Open: Every 1st & 3rd Thursday of the month from 12noon – 3:00pm, and
Every 2nd & 4th Saturday of the month from 12noon – 3:00pm.**

Bring along your research queries and brick walls to your branch library – use the resources there and receive assistance.

Branch LIBRARY at Parkview Community Lounge - 75 Queenspark Drive, Parklands

Canterbury Branch Library is an Affiliate Library of FamilySearch – access to restricted records here!!

FAMILY HISTORY CENTRE @ 25 FENDALTON ROAD

Hours: Tuesday 10:00am - 2:00pm and 7:00pm - 9:00pm

TŪRANGA - CHRISTCHURCH CENTRAL LIBRARY @ 60 CATHEDRAL SQUARE

OPEN MONDAY TO FRIDAY 9:00AM – 8:00PM (GROUND FLOOR 8:00AM – 8:00PM)

SATURDAY & SUNDAY 10:00AM – 5:00PM

CHRISTCHURCH PARKLANDS LIBRARY @ 46 QUEENSPARK DRIVE

OPEN MONDAY TO FRIDAY 9:00AM – 6:00PM. SATURDAY 10:00AM – 4:00PM

CHRISTCHURCH FENDALTON LIBRARY @ 4 JEFFREYS ROAD

OPEN MONDAY TO FRIDAY 9:00AM – 8:00PM. SATURDAY 10:00AM – 4:00PM

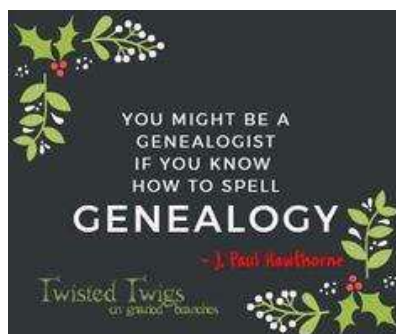
NEWSLETTER

NZSG Canterbury Branch
PO Box 38064,
Parklands,
CHRISTCHURCH 8842



FamilySearch
Affiliate
Library

Thanks to our Newsletter Printer (printing from his home)
- AndrewStark @ AWS Publications Ltd



Get your relatives speaking to one another again by sending a heartfelt Christmas card with a picture of your family with an extra child nobody knows.